



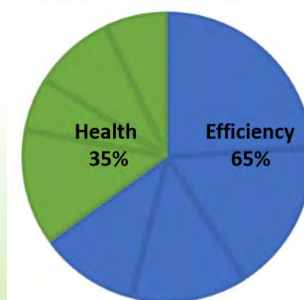
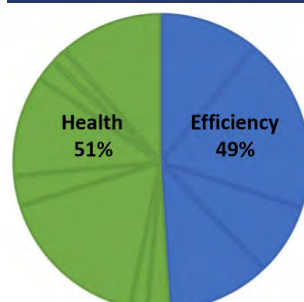
Seasonal Calving



NZ GENETICS

Low Input
High Components
Fertility First

NZMI 2020



BW 2020

 **Dovea** GENETICS
IRISH SIRES



Tasmania

Mark Handley 0448 487264

Jake Handley 0477 137778

Mainland

Jan Simpson 0427 741199

Mike Green 0400 385514

mark@vandiemen genetics.com.au

jake@vandiemen genetics.com.au

jan@vandiemen genetics.com.au

mike@vandiemen genetics.com.au



VDGSEBASTAIN

VDGTURLOUGH



HO 87%: Fr 13%

DAUGHTER PROVEN

A1A2

30EBI	244
PRODUCTION	126
FERTILITY	79
CALVING	30
BEEF/BCS	-6
L/WEIGHT	12
MANAGEMENT	-5
HEALTH	9

SIRE: COOLNASOON JUDGE

Shorter Stature
Great Efficiency
Chest & Muzzle Width
Great Rump Angle

First Daughters in Milk in Australia—
showing good open frame, good udders and
exceptional rumps.

Component and Fertility Improver

			ASI	206		
BPI 299	PR	PR%	MILK	FAT	FAT%	
	14	0.49	-458	36	0.80	

WORKABILITY

Milking Speed	98
Temperament	97
Likeability	96

aAa- 234

HEALTH

Survival	103
Calving Ease	102
Cell Count	123
Daughter Fert	113
Liveweight	92
Heat Tolerance	97
Mastitis Res.	101



HO 90%: Fr 10%

FERTILITY KING

A2A2

EBI	292
PRODUCTION	105
FERTILITY	141
CALVING	29
BEEF/BCS	0
L/WEIGHT	8
MANAGEMENT	-1
HEALTH	9

SIRE: VDGSEBASTAIN

Shorter Stature
Strength
Good Rump Angle
Daughter Calving Ease
Heat Tolerance

Shorter Stature, Chest & Muzzle
Width, good rump angle and daughter
calving ease.

Component, Strength and Fertility
Improver

			ASI	124		
BPI 235	PR	PR%	MILK	FAT	FAT%	
	5	0.44	-682	13	0.61	

WORKABILITY

Milking Speed	96
Temperament	97
Likeability	94

aAa- n/a

HEALTH

Survival	100
Calving Ease	103
Cell Count	122
Daughter Fert	122
Liveweight	93
Heat Tolerance	100
Mastitis Res.	103

VDGROMEEO

VDGSALAH



HO 91%: Fr 9%

CALVING EASE

A1A2

EBI	233
PRODUCTION	103
FERTILITY	94
CALVING	28
BEEF/BCS	-4
MAINTENANCE	7
MANAGEMENT	5
HEALTH	2

SIRE: VDGSEBASTAIN

Shorter Stature
Massive Components
Very Easy Calving
Chest & Muzzle Width
Great Rump Angle

Very Easy calving sire could be used for heifer mating. Will Improve strength, fertility, daughter calving ease and Milk Solids



HO 87%: Fr 13%

CORRECT RUMP ANGLE

A1A2

EBI	292
PRODUCTION	105
FERTILITY	141
CALVING	29
BEEF/BCS	0
MAINTENANCE	8
MANAGEMENT	-1
HEALTH	9

SIRE: OLCASTL.RONALDO

Shorter Stature
Great Fertiltiy
Easy Calving
Chest & Muzzle Width
Great Rump Angle

Great Fertility

Will Improve strength, fertility, rump angle, daughter calving ease and milk components

BPI 230	ASI 172	PR	PR%	MILK	FAT	FAT%
		8	-0.41	-519	38	0.87

BPI 224	ASI 115	PR	PR%	MILK	FAT	FAT%
		10	0.37	-361	7	0.32

WORKABILITY

Milking Speed	99
Temperament	99
Likeability	98

aAa- 246

HEALTH

Survival	102
Calving Ease	104
Cell Count	120
Daughter Fert	113
Liveweight	96
Heat Tolerance	92
Mastitis Res.	100

WORKABILITY

Milking Speed	99
Temperament	100
Likeability	97

aAa- 423

HEALTH

Survival	102
Calving Ease	103
Cell Count	130
Daughter Fert	118
Liveweight	94
Heat Tolerance	97
Mastitis Res.	105

VDGHAROLD

VDGDIAMOND



HO 75%: Fr 25%

BIG COMPONENTS

A2A2

EBI	311
PRODUCTION	98
FERTILITY	158
CALVING	44
BEEF/BCS	-2
MAINTENANCE	4
MANAGEMENT	8
HEALTH	1

SIRE: OLCASTLE. RONALDO

Extra Strength with 25%
British Friesian
Shorter Stature
Chest & Muzzle Width
Great Fertility

Extra strength, Lower Stature, High Components, High Fertility, Good Pin Set and Good Daughter Calving Ability

Will substantially lift protein %



HO 87%: Fr 13%

EASY CALVING

A2A2

EBI	262
PRODUCTION	66
FERTILITY	129
CALVING	51
BEEF/BCS	-4
MAINTENANCE	12
MANAGEMENT	11
HEALTH	-5

SIRE: DIAMOND ANTON

Shorter Stature
Good Fertility
Very Easy Calving
Chest & Muzzle Width
Great Rump Angle

Very Easy calving sire could be used for heifer mating. Will Improve strength, fertility, daughter calving ease and Milk Solids

BPI 239	ASI 147	PR 7	PR% 0.57	MILK -875	FAT 7	FAT% 0.65
----------------	----------------	-------------	-----------------	------------------	--------------	------------------

BPI 237	ASI 150	PR 10	PR% 0.38	MILK -360	FAT 24	FAT% 0.57
----------------	----------------	--------------	-----------------	------------------	---------------	------------------

WORKABILITY		HEALTH	
Milking Speed	100	Survival	101
Temperament	98	Calving Ease	102
Likeability	97	Cell Count	124
		Daughter Fert	120
		Liveweight	94
		Heat Tolerance	94
		Mastitis Res.	104
aAa- n/a			

WORKABILITY		HEALTH	
Milking Speed	100	Survival	102
Temperament	99	Calving Ease	104
Likeability	97	Cell Count	108
		Daughter Fert	116
		Liveweight	94
		Heat Tolerance	95
		Mastitis Res.	100
aAa- 423			

VDGTIERNAN



HO 81%: Fr 19%

NO FUSS COWS

A2A2

EBI	286
PRODUCTION	108
FERTILITY	131
CALVING	23
BEEF/BCS	-8
MAINTENANCE	12
MANAGEMENT	1
HEALTH	13

SIRE: VDGSEBASTAIN

Shorter Stature
Good Fertility
Easy Calving
Chest & Muzzle Width
Great Rump Angle

Will Improve strength, fertility,
daughter calving ease and Milk Solids

VDGRODNEY



HO 75%: Fr 25%

HIGHER FRIESIAN %

A2A2

EBI	278
PRODUCTION	109
FERTILITY	117
CALVING	41
BEEF/BCS	-13
MAINTENANCE	11
MANAGEMENT	8
HEALTH	5

SIRE: KILDARRA MAESTRO

25% British Friesian
Lower Stature
Extra Strength
Easy Calving
Good Fertility

Will Improve strength, fertility,
daughter calving ease and Milk Solids

BPI 231	ASI 162				
PR	PR%	MILK	FAT	FAT%	
11	-0.45	-472	21	0.60	

WORKABILITY

Milking Speed	97
Temperament	99
Likeability	97

aAa- 234

HEALTH

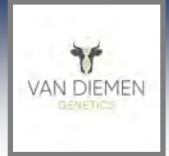
Survival	103
Calving Ease	103
Cell Count	121
Daughter Fert	117
Liveweight	93
Heat Tolerance	96
Mastitis Res.	104



aAa- 165



HOLSTEIN FRIESIAN



CRVHGCHUCK

aAa —

CRVROADSTER

aAa 654

A2A2



GAUNTLET X IGNITION X RAVEN

A2A2



GAUNTLET X IGNITION X BEAMER

	NZMI	BW	LONG.	L/WEIGHT	%HEALTH	%EFF.
BV	291	190	189	60.2	4	6
BA	109	13	73	54.4		
	MILK	PR.	PR%	FAT	FAT%	F +PR Kgs
BV	838	39.9	3.9	42.3	4.8	82.2
BA	820	26.8	3.7	15.7	4.3	
	FERT	BCS	SCS	CALVING	GEST. L	R.SURV.
BV	-.8	.21	.02	2.5	-1.8	-136
BA	-2.0	-.04	.04	2.0	-1.6	15

	NZMI	BW	LONG.	L/WEIGHT	%HEALTH	%EFF.
BV	336	251	196	44.4	5	7
BA	109	13	73	54.4		
	MILK	PR.	PR%	FAT	FAT%	F +PR Kgs
BV	667	40.1	4.1	49.0	5.1	89.1
BA	820	26.8	3.7	15.7	4.3	
	FERT	BCS	SCS	CALVING	GEST. L	R.SURV.
BV	-.1	.12	-.06	1.6	-1.7	-171
BA	-2.0	-.04	.04	2.0	-1.6	15

Shed Traits

gBV BA

Adaptability		0.41	0.19
Temperament		0.45	0.18
Milking Speed		0.35	0.04
Overall Opinion		0.60	0.27

Conformation

0 dtrs TOP

Stature		1.00	1.01
Capacity		0.93	0.15
Rump Angle		0.29	-0.02
Rump Width		0.58	0.41
Legs		0.01	-0.10
Udder Support		0.87	0.47
Fore Udder		0.82	0.33
Rear Udder		0.57	0.36
Front Teat		0.34	0.16
Rear Teat		0.62	0.39
Udder Overall		0.80	0.44
Dairy Conformation		0.74	0.29

Shed Traits

gBV BA

Adaptability		0.50	0.19
Temperament		0.47	0.18
Milking Speed		0.28	0.04
Overall Opinion		0.55	0.27

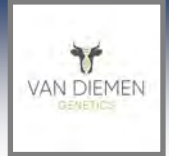
Conformation

0 dtrs TOP

Stature		0.73	1.01
Capacity		1.01	0.15
Rump Angle		0.17	-0.02
Rump Width		0.61	0.41
Legs		-0.10	-0.10
Udder Support		0.51	0.47
Fore Udder		0.59	0.33
Rear Udder		0.58	0.36
Front Teat		0.33	0.16
Rear Teat		0.32	0.39
Udder Overall		0.79	0.44
Dairy Conformation		0.80	0.29



HOLSTEIN FRIESIAN

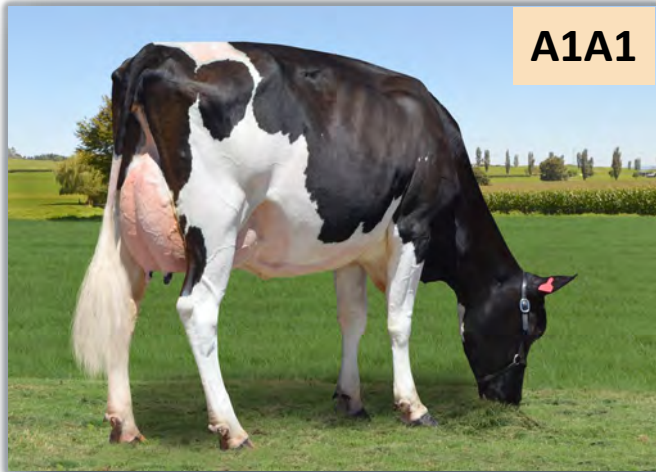


CRVCORTEX

aAa 564

CRVDUFFY

aAa 423



A1A1



A2A2

MACCA X FIRENZE X MINTED

MACCA X FIRENZE X MINTED

89 Dtrs, 33 herds

94 Dtrs, 49 herds

	NZMI	BW	LONG.	L/WEIGHT	%HEALTH	%EFF.
BV	245	83	183	77.5	3	6
BA	109	13	73	54.4		
	MILK	PR.	PR%	FAT	FAT%	F +PR Kgs
BV	1527	45.8	3.6	33.2	4.1	79
BA	820	26.8	3.7	15.7	4.3	
	FERT	BCS	SCS	CALVING	GEST. L	R.SURV.
BV	-.2	.04	-.10	2.9	-5.6	-77
BA	-2.0	-.04	.04	2.0	-1.6	15

	NZMI	BW	LONG.	L/WEIGHT	%HEALTH	%EFF.
BV	275	111	152	47.4	2	6
BA	109	13	73	54.4		
	MILK	PR.	PR%	FAT	FAT%	F +PR Kgs
BV	1045	46.1	3.9	22.7	4.3	68.8
BA	820	26.8	3.7	15.7	4.3	
	FERT	BCS	SCS	CALVING	GEST. L	R.SURV.
BV	-.8	-.09	-.21	2.8	-1.4	-110
BA	-2.0	-.04	.04	2.0	-1.6	15

Shed Traits

BV BA

Adaptability		0.79	0.19
Temperament		0.76	0.18
Milking Speed		0.26	0.04
Overall Opinion		0.76	0.27

Conformation

71 dtrs TOP

Stature		1.14	1.01
Capacity		0.70	0.15
Rump Angle		-0.37	-0.02
Rump Width		0.65	0.41
Legs		-0.16	-0.10
Udder Support		0.96	0.47
Fore Udder		0.44	0.33
Rear Udder		1.05	0.36
Front Teat		0.23	0.16
Rear Teat		1.06	0.39
Udder Overall		0.89	0.44
Dairy Conformation		0.82	0.29

Shed Traits

BV BA

Adaptability		0.33	0.19
Temperament		0.30	0.18
Milking Speed		0.33	0.04
Overall Opinion		0.53	0.27

Conformation

42 dtrs TOP

Stature		0.96	1.01
Capacity		0.42	0.15
Rump Angle		-0.01	-0.02
Rump Width		0.60	0.41
Legs		-0.05	-0.10
Udder Support		0.88	0.47
Fore Udder		0.89	0.33
Rear Udder		0.70	0.36
Front Teat		0.48	0.16
Rear Teat		0.19	0.39
Udder Overall		1.02	0.44
Dairy Conformation		0.55	0.29



HOLSTEIN FRIESIAN



CRVBEDFORD

aAa —

CRVQUANTICO

aAa 516



HOTHOUSE X ROCKSOLID X MINTED



BEAMER X MINTED X TOPGUN

104 Dtrs, 32 herds

	NZMI	BW	LONG.	L/WEIGHT	%HEALTH	%EFF.
BV	227	156	499	57.5	6	6
BA	109	13	73	54.4		
	MILK	PR.	PR%	FAT	FAT%	F +PR Kgs
BV	453	23.2	3.9	23.3	4.8	46.5
BA	820	26.8	3.7	15.7	4.3	
	FERT	BCS	SCS	CALVING	GEST. L	R.SURV.
BV	6.8	.24	.40	.5	-3.5	161
BA	-2.0	-.04	.04	2.0	-1.6	15

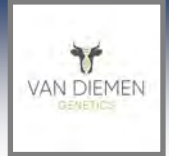
	NZMI	BW	LONG.	L/WEIGHT	%HEALTH	%EFF.
BV	315	194	488	22.7	4	9
BA	109	13	73	54.4		
	MILK	PR.	PR%	FAT	FAT%	F +PR Kgs
BV	742	42.5	4.1	21.4	4.5	63.9
BA	820	26.8	3.7	15.7	4.3	
	FERT	BCS	SCS	CALVING	GEST. L	R.SURV.
BV	3.2	.03	.34	1.5	-5.5	135
BA	-2.0	-.04	.04	2.0	-1.6	15

Shed Traits		BV	BA
Adaptability	<div></div>	0.33	0.19
Temperament	<div></div>	0.31	0.18
Milking Speed	<div></div>	0.28	0.04
Overall Opinion	<div></div>	0.46	0.27
Conformation		85 dtrs TOP	
Stature	<div></div>	0.86	1.01
Capacity	<div></div>	0.11	0.15
Rump Angle	<div></div>	0.20	-0.02
Rump Width	<div></div>	-0.27	0.41
Legs	<div></div>	-0.16	-0.10
Udder Support	<div></div>	0.66	0.47
Fore Udder	<div></div>	0.61	0.33
Rear Udder	<div></div>	0.36	0.36
Front Teat	<div></div>	0.59	0.16
Rear Teat	<div></div>	0.48	0.39
Udder Overall	<div></div>	0.76	0.44
Dairy Conformation	<div></div>	0.13	0.29

Shed Traits		gBV	BA
Adaptability	<div></div>	0.28	0.19
Temperament	<div></div>	0.28	0.18
Milking Speed	<div></div>	0.16	0.04
Overall Opinion	<div></div>	0.33	0.27
Conformation		0 dtrs TOP	
Stature	<div></div>	0.70	1.01
Capacity	<div></div>	0.58	0.15
Rump Angle	<div></div>	0.03	-0.02
Rump Width	<div></div>	1.02	0.41
Legs	<div></div>	0.21	-0.10
Udder Support	<div></div>	0.63	0.47
Fore Udder	<div></div>	0.52	0.33
Rear Udder	<div></div>	0.60	0.36
Front Teat	<div></div>	0.36	0.16
Rear Teat	<div></div>	0.69	0.39
Udder Overall	<div></div>	0.70	0.44
Dairy Conformation	<div></div>	0.83	0.29



HOLSTEIN FRIESIAN



CRVMCLAREN

aAa —

CRVHOTRILEY

aAa —



A2A2



A2A2

HOTHOUSE X ROCKSOLID X EXPRESSO

HOTHOUSE X ROCKSOLID X MINTED

100 Dtrs, 33 herds

87 Dtrs, 24 herds

	NZMI	BW	LONG.	L/WEIGHT	%HEALTH	%EFF.
BV	227	107	349	37.3	3	7
BA	109	13	73	54.4		
	MILK	PR.	PR%	FAT	FAT%	F +PR Kgs
BV	956	37.5	3.8	18.9	4.3	56.4
BA	820	26.8	3.7	15.7	4.3	
	FERT	BCS	SCS	CALVING	GEST. L	R.SURV.
BV	-.3	-.02	.08	.5	-2.3	141
BA	-2.0	-.04	.04	2.0	-1.6	15

	NZMI	BW	LONG.	L/WEIGHT	%HEALTH	%EFF.
BV	173	88	448	22.9	5	5
BA	109	13	73	54.4		
	MILK	PR.	PR%	FAT	FAT%	F +PR Kgs
BV	495	20.0	3.8	11.3	4.5	31.3
BA	820	26.8	3.7	15.7	4.3	
	FERT	BCS	SCS	CALVING	GEST. L	R.SURV.
BV	.2	-.01	.06	.8	-2.0	330
BA	-2.0	-.04	.04	2.0	-1.6	15

Shed Traits

BV BA

Adaptability		0.32	0.19
Temperament		0.33	0.18
Milking Speed		-0.01	0.04
Overall Opinion		0.29	0.27

Conformation

92 dtrs TOP

Stature		0.59	1.01
Capacity		0.21	0.15
Rump Angle		0.25	-0.02
Rump Width		0.51	0.41
Legs		-0.11	-0.10
Udder Support		0.64	0.47
Fore Udder		0.50	0.33
Rear Udder		0.58	0.36
Front Teat		0.12	0.16
Rear Teat		-0.06	0.39
Udder Overall		0.65	0.44
Dairy Conformation		0.30	0.29

Shed Traits

BV BA

Adaptability		0.44	0.19
Temperament		0.27	0.18
Milking Speed		0.30	0.04
Overall Opinion		0.51	0.27

Conformation

81 dtrs TOP

Stature		0.37	1.01
Capacity		0.29	0.15
Rump Angle		-0.46	-0.02
Rump Width		0.13	0.41
Legs		-0.14	-0.10
Udder Support		1.02	0.47
Fore Udder		0.80	0.33
Rear Udder		0.93	0.36
Front Teat		0.03	0.16
Rear Teat		0.18	0.39
Udder Overall		0.95	0.44
Dairy Conformation		0.34	0.29

CRVPHONIC

aAa 423



A2A2

JUSTICE X BANQUET X FROSTMAN

4001 Dtrs, 673 herds

	NZMI	BW	LONG.	L/WEIGHT	%HEALTH	%EFF.
BV	205	133	321	38.2	5	5
BA	109	13	73	54.4		
	MILK	PR.	PR%	FAT	FAT%	F +PR Kgs
BV	554	26.5	3.9	21.6	4.7	48.1
BA	820	26.8	3.7	15.7	4.3	
	FERT	BCS	SCS	CALVING	GEST. L	R.SURV.
BV	1.7	.10	-.18	-1.0	.5	54
BA	-2.0	-.04	.04	2.0	-1.6	15

Shed Traits

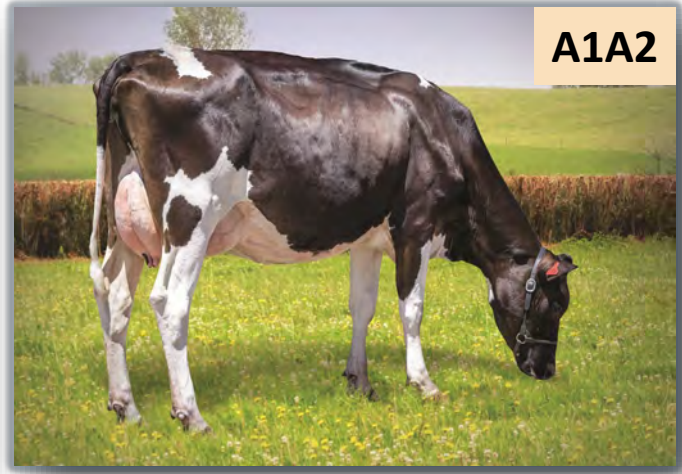
	BV	BA
Adaptability	0.41	0.19
Temperament	0.48	0.18
Milking Speed	0.18	0.04
Overall Opinion	0.45	0.27

Conformation

	106 dtrs TOP
Stature	0.43 1.01
Capacity	0.25 0.15
Rump Angle	-0.18 -0.02
Rump Width	0.52 0.41
Legs	0.08 -0.10
Udder Support	0.47 0.47
Fore Udder	0.57 0.33
Rear Udder	0.27 0.36
Front Teat	0.40 0.16
Rear Teat	0.16 0.39
Udder Overall	0.57 0.44
Dairy Conformation	0.36 0.29

CRVTIMELINE

aAa 561



A1A2

BLITZ X FIRENZE X MINTED

91 Dtrs, 39 herds

	NZMI	BW	LONG.	L/WEIGHT	%HEALTH	%EFF.
BV	260	171	308	36.1	5	6
BA	109	13	73	54.4		
	MILK	PR.	PR%	FAT	FAT%	F +PR Kgs
BV	653	33.3	4.0	28.5	4.7	61.8
BA	820	26.8	3.7	15.7	4.3	
	FERT	BCS	SCS	CALVING	GEST. L	R.SURV.
BV	3.0	-0.2	-.15	1.2	-6.3	-11
BA	-2.0	-.04	.04	2.0	-1.6	15

Shed Traits

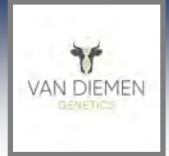
	BV	BA
Adaptability	0.60	0.19
Temperament	0.59	0.18
Milking Speed	0.15	0.04
Overall Opinion	0.60	0.27

Conformation

	63 dtrs TOP
Stature	0.52 1.01
Capacity	0.72 0.15
Rump Angle	0.03 -0.02
Rump Width	0.41 0.41
Legs	-0.10 -0.10
Udder Support	0.48 0.47
Fore Udder	0.20 0.33
Rear Udder	0.31 0.36
Front Teat	0.12 0.16
Rear Teat	0.95 0.39
Udder Overall	0.36 0.44
Dairy Conformation	0.79 0.29



HOLSTEIN FRIESIAN



CRVRUSKIEBEAR

aAa 654

CRVOVERDRAFT

aAa 156



BEAMER X MINTED X EXPRESSO

BEAMER X MINTED X HOTHOUSE

138 Dtrs, 38 herds

	NZMI	BW	LONG.	L/WEIGHT	%HEALTH	%EFF.
BV	239	119	271	49.7	5	6
BA	109	13	73	54.4		
	MILK	PR.	PR%	FAT	FAT%	F +PR Kgs
BV	972	35.7	3.8	28.0	4.4	63.7
BA	820	26.8	3.7	15.7	4.3	
	FERT	BCS	SCS	CALVING	GEST. L	R.SURV.
BV	2.1	.04	.29	1.2	-2.7	22
BA	-2.0	-.04	.04	2.0	-1.6	15

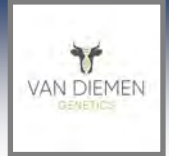
	NZMI	BW	LONG.	L/WEIGHT	%HEALTH	%EFF.
BV	239	93	363	47.5	4	6
BA	109	13	73	54.4		
	MILK	PR.	PR%	FAT	FAT%	F +PR Kgs
BV	1016	38.9	3.8	16.8	4.2	55.7
BA	820	26.8	3.7	15.7	4.3	
	FERT	BCS	SCS	CALVING	GEST. L	R.SURV.
BV	.8	.05	.18	1.6	-5.0	130
BA	-2.0	-.04	.04	2.0	-1.6	15

Shed Traits	BV	BA
Adaptability	0.45	0.19
Temperament	0.47	0.18
Milking Speed	0.32	0.04
Overall Opinion	0.54	0.27
Conformation	46 dtrs TOP	
Stature	0.88	1.01
Capacity	0.61	0.15
Rump Angle	0.54	-0.02
Rump Width	0.81	0.41
Legs	-0.03	-0.10
Udder Support	0.68	0.47
Fore Udder	0.27	0.33
Rear Udder	0.57	0.36
Front Teat	0.37	0.16
Rear Teat	0.97	0.39
Udder Overall	0.59	0.44
Dairy Conformation	0.71	0.29

Shed Traits	gBV	BA
Adaptability	0.25	0.19
Temperament	0.09	0.18
Milking Speed	0.17	0.04
Overall Opinion	0.39	0.27
Conformation	0 dtrs TOP	
Stature	1.05	1.01
Capacity	0.45	0.15
Rump Angle	0.16	-0.02
Rump Width	0.78	0.41
Legs	0.02	-0.10
Udder Support	0.74	0.47
Fore Udder	0.77	0.33
Rear Udder	0.71	0.36
Front Teat	0.51	0.16
Rear Teat	0.67	0.39
Udder Overall	0.95	0.44
Dairy Conformation	0.62	0.29



HOLSTEIN FRIESIAN



CRVLENNAN

aAa —

CRVGERONIMO

aAa 546



A2A2



A2A2

GRANDEUR X FROSTMAN X ROSCOE

MINTED X PIERRE X SPICY

119 Dtrs, 27 herds

305 Dtrs, 62 herds

	NZMI	BW	LONG.	L/WEIGHT	%HEALTH	%EFF.
BV	280	248	437	54.7	5	8
BA	109	13	73	54.4		
	MILK	PR.	PR%	FAT	FAT%	F +PR Kgs
BV	650	31.9	3.9	47.8	5.1	79.7
BA	820	26.8	3.7	15.7	4.3	
	FERT	BCS	SCS	CALVING	GEST. L	R.SURV.
BV	1.6	.12	-.50	.2	-1.8	56
BA	-2.0	-.04	.04	2.0	-1.6	15

	NZMI	BW	LONG.	L/WEIGHT	%HEALTH	%EFF.
BV	304	183	142	51.2	1	6
BA	109	13	73	54.4		
	MILK	PR.	PR%	FAT	FAT%	F +PR Kgs
BV	1639	50.9	3.6	50.2	4.3	101.1
BA	820	26.8	3.7	15.7	4.3	
	FERT	BCS	SCS	CALVING	GEST. L	R.SURV.
BV	-.2	-.02	-0.6	2.6	-1.7	-210
BA	-2.0	-.04	.04	2.0	-1.6	15

Shed Traits

BV BA

Adaptability		0.07	0.19
Temperament		0.09	0.18
Milking Speed		0.08	0.04
Overall Opinion		0.06	0.27

Conformation

102 dtrs TOP

Stature		0.84	1.01
Capacity		0.70	0.15
Rump Angle		0.26	-0.02
Rump Width		0.91	0.41
Legs		0.01	-0.10
Udder Support		0.19	0.47
Fore Udder		0.46	0.33
Rear Udder		0.26	0.36
Front Teat		-0.19	0.16
Rear Teat		-0.26	0.39
Udder Overall		0.23	0.44
Dairy Conformation		0.75	0.29

Shed Traits

BV BA

Adaptability		0.39	0.19
Temperament		0.39	0.18
Milking Speed		0.10	0.04
Overall Opinion		0.51	0.27

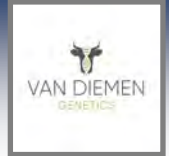
Conformation

73 dtrs TOP

Stature		0.62	1.01
Capacity		0.70	0.15
Rump Angle		-0.39	-0.02
Rump Width		0.61	0.41
Legs		-0.02	-0.10
Udder Support		0.56	0.47
Fore Udder		0.43	0.33
Rear Udder		0.50	0.36
Front Teat		0.22	0.16
Rear Teat		0.68	0.39
Udder Overall		0.52	0.44
Dairy Conformation		0.72	0.29



HOLSTEIN FRIESIAN



CRVFLAVIN

aAa 516

CRVGLOWING

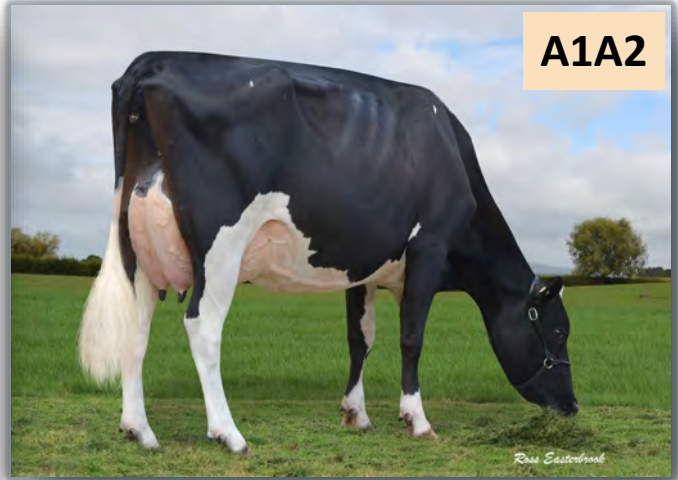
aAa 534

A2A2



GRANITE X MINTED X DANNY

A1A2



GUARANTEE X PIERRE X JUSTICE

3277 Dtrs, 454 herds

	NZMI	BW	LONG.	L/WEIGHT	%HEALTH	%EFF.
BV	217	96	292	50	5	5
BA	109	13	73	54.4		
	MILK	PR.	PR%	FAT	FAT%	F +PR Kgs
BV	877	37	3.9	15.1	4.3	52.1
BA	820	26.8	3.7	15.7	4.3	
	FERT	BCS	SCS	CALVING	GEST. L	R.SURV.
BV	1.8	.13	-.07	.6	-7.3	-3
BA	-2.0	-.04	.04	2.0	-1.6	15

	NZMI	BW	LONG.	L/WEIGHT	%HEALTH	%EFF.
BV	149	62	229	56.7	3	5
BA	109	13	73	54.4		
	MILK	PR.	PR%	FAT	FAT%	F +PR Kgs
BV	1107	26.2	3.5	25.5	4.3	51.7
BA	820	26.8	3.7	15.7	4.3	
	FERT	BCS	SCS	CALVING	GEST. L	R.SURV.
BV	3.8	.20	.54	.4	-8.1	11
BA	-2.0	-.04	.04	2.0	-1.6	15

Shed Traits

	gBV	BA
Adaptability	0.32	0.19
Temperament	0.40	0.18
Milking Speed	0.20	0.04
Overall Opinion	0.43	0.27

Conformation

	0 dtrs TOP	
Stature	0.71	1.01
Capacity	0.60	0.15
Rump Angle	0.13	-0.02
Rump Width	0.52	0.41
Legs	-0.16	-0.10
Udder Support	0.46	0.47
Fore Udder	0.55	0.33
Rear Udder	0.36	0.36
Front Teat	-0.18	0.16
Rear Teat	-0.11	0.39
Udder Overall	0.48	0.44
Dairy Conformation	0.80	0.29

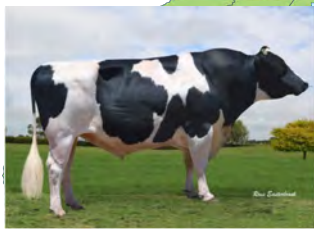
Shed Traits

	BV	BA
Adaptability	0.47	0.19
Temperament	0.49	0.18
Milking Speed	0.02	0.04
Overall Opinion	0.51	0.27

Conformation

	85 dtrs TOP	
Stature	0.86	1.01
Capacity	0.25	0.15
Rump Angle	-0.14	-0.02
Rump Width	0.88	0.41
Legs	0.09	-0.10
Udder Support	0.44	0.47
Fore Udder	0.37	0.33
Rear Udder	0.66	0.36
Front Teat	0.06	0.16
Rear Teat	0.23	0.39
Udder Overall	0.48	0.44
Dairy Conformation	0.30	0.29

NZMI 2020



BW 2020



Tasmania

Mark Handley 0448 487264

mark@vandiemengenetics.com.au

Jake Handley 0477 137778

jake@vandiemengenetics.com.au

Mainland

Jan Simpson 0427 741199

jan@vandiemengenetics.com.au

Mike Green 0400 385514

mike@vandiemengenetics.com.au



KIWI CROSS



CRVHARMON J9:F7

aAa 561

CRVTEAK F9:J7

aAa 561

A2A2



SOLARIS X RAMROD X NORTHSEA

A2A2



SIERRA X MINTED X KINGPIN

50Dtrs, 18 herds

	NZMI	BW	LONG.	L/WEIGHT	%HEALTH	%EFF.
BV	254	265	331	-29.7	5	10
BA	175	155	246	-5.5		
	MILK	PR.	PR%	FAT	FAT%	F +PR Kgs
BV	69	17.8	4.1	27.3	5.3	35.1
BA	213	18.1	4.0	19.1	5.0	
	FERT	BCS	SCS	CALVING	GEST. L	R.SURV.
BV	1.8	.12	-.58	-.8	-6.1	-60
BA	.5	.03	.05	-.2	*2.6	48

	NZMI	BW	LONG.	L/WEIGHT	%HEALTH	%EFF.
BV	274	237	360	-16.6	4	9
BA	175	155	246	-5.5		
	MILK	PR.	PR%	FAT	FAT%	F +PR Kgs
BV	226	24.4	4.1	28.6	5.1	53
BA	213	18.1	4.0	19.1	5.0	
	FERT	BCS	SCS	CALVING	GEST. L	R.SURV.
BV	.2	-.05	-.14	1.2	-4.6	85
BA	.5	.03	.05	-.2	*2.6	48

Shed Traits

BV BA

Adaptability	<div></div>	0.25	0.17
Temperament	<div></div>	0.20	0.18
Milking Speed	<div></div>	0.10	0.08
Overall Opinion	<div></div>	0.26	0.20

Conformation

31 dtrs TOP

Stature	<div></div>	-0.64	-0.10
Capacity	<div></div>	0.45	0.24
Rump Angle	<div></div>	-0.04	-0.08
Rump Width	<div></div>	0.05	0.08
Legs	<div></div>	-0.01	0.06
Udder Support	<div></div>	0.43	0.19
Fore Udder	<div></div>	0.12	0.17
Rear Udder	<div></div>	0.45	0.23
Front Teat	<div></div>	0.13	0.03
Rear Teat	<div></div>	0.84	0.17
Udder Overall	<div></div>	0.28	0.22
Dairy Conformation	<div></div>	0.38	0.23

Shed Traits

gBV BA

Adaptability	<div></div>	0.55	0.17
Temperament	<div></div>	0.49	0.18
Milking Speed	<div></div>	-0.01	0.08
Overall Opinion	<div></div>	0.47	0.20

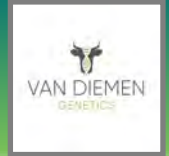
Conformation

0 dtrs TOP

Stature	<div></div>	-0.27	-0.10
Capacity	<div></div>	0.57	0.24
Rump Angle	<div></div>	-0.23	-0.08
Rump Width	<div></div>	-0.06	0.08
Legs	<div></div>	0.12	0.06
Udder Support	<div></div>	0.45	0.19
Fore Udder	<div></div>	0.58	0.17
Rear Udder	<div></div>	0.56	0.23
Front Teat	<div></div>	0.19	0.03
Rear Teat	<div></div>	0.45	0.17
Udder Overall	<div></div>	0.56	0.22
Dairy Conformation	<div></div>	0.57	0.23



KIWI CROSS



CRVKOWHAI F11:J5

aAa —

CRVWANAKA F11:J5

aAa —

A2A2

A2A2



JAYDIE X BRUTUS X BLADE

STORM X CHECKPOINT X MINTED

	NZMI	BW	LONG.	L/WEIGHT	%HEALTH	%EFF.
BV	228	234	388	9.9	5	6
BA	175	155	246	-5.5		
	MILK	PR.	PR%	FAT	FAT%	F +PR Kgs
BV	-144	16.9	4.3	26.1	5.5	43
BA	213	18.1	4.0	19.1	5.0	
	FERT	BCS	SCS	CALVING	GEST. L	R.SURV.
BV	3.1	.22	-.19	-1.0	-3.3	37
BA	.5	.03	.05	-.2	*2.6	48

98 Dtrs, 31 herds

	NZMI	BW	LONG.	L/WEIGHT	%HEALTH	%EFF.
BV	242	202	290	-2.5	4	9
BA	175	155	246	-5.5		
	MILK	PR.	PR%	FAT	FAT%	F +PR Kgs
BV	458	22.4	3.9	30.5	4.9	52.9
BA	213	18.1	4.0	19.1	5.0	
	FERT	BCS	SCS	CALVING	GEST. L	R.SURV.
BV	.8	.04	-.15	-.8	-.5	15
BA	.5	.03	.05	-.2	*2.6	48

Shed Traits

gBV BA

Adaptability		0.29	0.17
Temperament		0.24	0.18
Milking Speed		0.07	0.08
Overall Opinion		0.30	0.20

Conformation

0 dtrs TOP

Stature		0.11	-0.10
Capacity		0.45	0.24
Rump Angle		-0.50	-0.08
Rump Width		0.19	0.08
Legs		-0.08	0.06
Udder Support		0.37	0.19
Fore Udder		0.46	0.17
Rear Udder		0.40	0.23
Front Teat		0.04	0.03
Rear Teat		0.17	0.17
Udder Overall		0.32	0.22
Dairy Conformation		0.40	0.23

Shed Traits

BV BA

Adaptability		0.18	0.17
Temperament		0.20	0.18
Milking Speed		0.11	0.08
Overall Opinion		0.31	0.20

Conformation

66 dtrs TOP

Stature		0.09	-0.10
Capacity		0.18	0.24
Rump Angle		0.20	-0.08
Rump Width		0.37	0.08
Legs		0.11	0.06
Udder Support		0.66	0.19
Fore Udder		0.64	0.17
Rear Udder		0.48	0.23
Front Teat		0.40	0.03
Rear Teat		0.56	0.17
Udder Overall		0.70	0.22
Dairy Conformation		0.21	0.23



KIWI CROSS



CRVMOHAKA J12:F4

aAa —

CRVLONDON J13:F3

aAa 516

A2A2



TERRIFIC X ADMIRAL X CHECKPOINT

A2A2



DEGREE X NEVVY X MAUNGA

79 Dtrs, 28 herds

	NZMI	BW	LONG.	L/WEIGHT	%HEALTH	%EFF.
BV	312	315	472	-41.7	6	12
BA	175	155	246	-5.5		
	MILK	PR.	PR%	FAT	FAT%	F +PR Kgs
BV	65	22.4	4.2	32.3	5.4	54.7
BA	213	18.1	4.0	19.1	5.0	
	FERT	BCS	SCS	CALVING	GEST. L	R.SURV.
BV	.3	.15	-.10	-1.4	-.6.2	95
BA	.5	.03	.05	-.2	*2.6	48

91 Dtrs, 25 herds

	NZMI	BW	LONG.	L/WEIGHT	%HEALTH	%EFF.
BV	271	257	325	-34.9	6	9
BA	175	155	246	-5.5		
	MILK	PR.	PR%	FAT	FAT%	F +PR Kgs
BV	-65	16.7	4.2	24.2	5.3	40.9
BA	213	18.1	4.0	19.1	5.0	
	FERT	BCS	SCS	CALVING	GEST. L	R.SURV.
BV	2.8	.11	-.12	-1.5	-.6	-33
BA	.5	.03	.05	-.2	*2.6	48

Shed Traits

BV BA

Adaptability		0.49	0.17
Temperament		0.49	0.18
Milking Speed		0.26	0.08
Overall Opinion		0.58	0.20

Conformation

49 dtrs TOP

Stature		-0.74	-0.10
Capacity		0.54	0.24
Rump Angle		-0.45	-0.08
Rump Width		0.06	0.08
Legs		0.06	0.06
Udder Support		0.61	0.19
Fore Udder		0.31	0.17
Rear Udder		0.69	0.23
Front Teat		0.06	0.03
Rear Teat		0.27	0.17
Udder Overall		0.55	0.22
Dairy Conformation		0.57	0.23

Shed Traits

BV BA

Adaptability		0.22	0.17
Temperament		0.19	0.18
Milking Speed		0.18	0.08
Overall Opinion		0.29	0.20

Conformation

41 dtrs TOP

Stature		-0.55	-0.10
Capacity		0.27	0.24
Rump Angle		0.07	-0.08
Rump Width		0.42	0.08
Legs		0.03	0.06
Udder Support		0.52	0.19
Fore Udder		0.64	0.17
Rear Udder		0.86	0.23
Front Teat		0.23	0.03
Rear Teat		-0.15	0.17
Udder Overall		0.78	0.22
Dairy Conformation		0.40	0.23



KIWI CROSS



CRVNGAURUHOE F10:J6 aAa —

CRVGURKHA J9:F7

aAa 516

A2A2



JAYDIE X BRUTUS X MINTED

A1A2



BEAMER X MINTED X CAPS GOLDIE

91 Dtrs, 26 herds

	NZMI	BW	LONG.	L/WEIGHT	%HEALTH	%EFF.
BV	308	287	489	-3.3	7	11
BA	175	155	246	-5.5		
	MILK	PR.	PR%	FAT	FAT%	F +PR Kgs
BV	494	30.3	4.0	31.6	4.9	61.9
BA	213	18.1	4.0	19.1	5.0	
	FERT	BCS	SCS	CALVING	GEST. L	R.SURV.
BV	3.6	.32	-.42	-1.6	-1.6	-38
BA	.5	.03	.05	-.2	*2.6	48

	NZMI	BW	LONG.	L/WEIGHT	%HEALTH	%EFF.
BV	322	325	397	-2.7	6	8
BA	175	155	246	-5.5		
	MILK	PR.	PR%	FAT	FAT%	F +PR Kgs
BV	-350	16.3	4.5	42.8	6.1	59.1
BA	213	18.1	4.0	19.1	5.0	
	FERT	BCS	SCS	CALVING	GEST. L	R.SURV.
BV	4.2	.10	.02	.5	.1	21
BA	.5	.03	.05	-.2	*2.6	48

Shed Traits		BV	BA
Adaptability	<div></div>	0.37	0.17
Temperament	<div></div>	0.35	0.18
Milking Speed	<div></div>	0.32	0.08
Overall Opinion	<div></div>	0.43	0.20
Conformation		60 dtrs TOP	
Stature	<div></div>	-0.29	-0.10
Capacity	<div></div>	0.59	0.24
Rump Angle	<div></div>	-0.37	-0.08
Rump Width	<div></div>	-0.20	0.08
Legs	<div></div>	0.06	0.06
Udder Support	<div></div>	0.37	0.19
Fore Udder	<div></div>	0.40	0.17
Rear Udder	<div></div>	0.36	0.23
Front Teat	<div></div>	-0.18	0.03
Rear Teat	<div></div>	0.14	0.17
Udder Overall	<div></div>	0.32	0.22
Dairy Conformation	<div></div>	0.44	0.23

Shed Traits		gBV	BA
Adaptability	<div></div>	0.33	0.17
Temperament	<div></div>	0.35	0.18
Milking Speed	<div></div>	0.34	0.08
Overall Opinion	<div></div>	0.41	0.20
Conformation		0 dtrs TOP	
Stature	<div></div>	-0.29	-0.10
Capacity	<div></div>	0.52	0.24
Rump Angle	<div></div>	0.21	-0.08
Rump Width	<div></div>	0.24	0.08
Legs	<div></div>	0.10	0.06
Udder Support	<div></div>	0.72	0.19
Fore Udder	<div></div>	0.66	0.17
Rear Udder	<div></div>	0.91	0.23
Front Teat	<div></div>	0.26	0.03
Rear Teat	<div></div>	0.25	0.17
Udder Overall	<div></div>	0.83	0.22
Dairy Conformation	<div></div>	0.60	0.23



KIWI CROSS



CRVPELORUS F10:J6

aAa 513

CRVPHASER F12:J4

aAa 561

A1A2



BEAMER X MINTED X SOLARIS

A2A2



HOTHOUSE X ROCKSOLID X DAREDEVIL

	NZMI	BW	LONG.	L/WEIGHT	%HEALTH	%EFF.
BV	292	236	448	14.6	7	9
BA	175	155	246	-5.5		
	MILK	PR.	PR%	FAT	FAT%	F +PR Kgs
BV	409	28.7	4.1	33.4	5.0	62.1
BA	213	18.1	4.0	19.1	5.0	
	FERT	BCS	SCS	CALVING	GEST. L	R.SURV.
BV	1.2	.10	.03	.1	-10.8	134
BA	.5	.03	.05	-.2	-2.6	48

	NZMI	BW	LONG.	L/WEIGHT	%HEALTH	%EFF.
BV	284	239	497	11.5	5	9
BA	175	155	246	-5.5		
	MILK	PR.	PR%	FAT	FAT%	F +PR Kgs
BV	485	27.6	4.0	32.6	4.9	61.2
BA	213	18.1	4.0	19.1	5.0	
	FERT	BCS	SCS	CALVING	GEST. L	R.SURV.
BV	2.2	.13	-.07	.4	-4.3	146
BA	.5	.03	.05	-.2	-2.6	48

Shed Traits	gBV	BA
Adaptability	0.54	0.17
Temperament	0.60	0.18
Milking Speed	-0.01	0.08
Overall Opinion	0.53	0.20
Conformation	0 dtrs TOP	
Stature	0.10	-0.10
Capacity	0.86	0.24
Rump Angle	0.24	-0.08
Rump Width	0.48	0.08
Legs	0.08	0.06
Udder Support	0.62	0.19
Fore Udder	0.46	0.17
Rear Udder	0.57	0.23
Front Teat	0.28	0.03
Rear Teat	0.48	0.17
Udder Overall	0.57	0.22
Dairy Conformation	1.04	0.23

Shed Traits	gBV	BA
Adaptability	0.28	0.17
Temperament	0.30	0.18
Milking Speed	0.19	0.08
Overall Opinion	0.31	0.20
Conformation	0 dtrs TOP	
Stature	-0.01	-0.10
Capacity	0.36	0.24
Rump Angle	-0.30	-0.08
Rump Width	0.09	0.08
Legs	0.03	0.06
Udder Support	0.47	0.19
Fore Udder	0.62	0.17
Rear Udder	0.69	0.23
Front Teat	0.19	0.03
Rear Teat	-0.09	0.17
Udder Overall	0.76	0.22
Dairy Conformation	0.40	0.23



KIWI CROSS



CRVTARARUA F12:J4

aAa 516

CRVKAIMAI F11:J5

aAa —



A2A2

HOTHOUSE X ROCKSOLID X MINTED

134 Dtrs, 32 herds

	NZMI	BW	LONG.	L/WEIGHT	%HEALTH	%EFF.
BV	218	126	434	29.8	4	7
BA	175	155	246	-5.5		
	MILK	PR.	PR%	FAT	FAT%	F +PR Kgs
BV	772	31.3	3.8	17.5	4.4	48.8
BA	213	18.1	4.0	19.1	5.0	
	FERT	BCS	SCS	CALVING	GEST. L	R.SURV.
BV	.8	.15	.21	1.0	-5.4	187
BA	.5	.03	.05	-.2	*2.6	48

Shed Traits

		BV	BA
Adaptability	<div></div>	0.40	0.17
Temperament	<div></div>	0.35	0.18
Milking Speed	<div></div>	0.07	0.08
Overall Opinion	<div></div>	0.37	0.20

Conformation

91 dtrs TOP

		BV	BA
Stature	<div></div>	0.44	-0.10
Capacity	<div></div>	0.45	0.24
Rump Angle	<div></div>	0.28	-0.08
Rump Width	<div></div>	0.41	0.08
Legs	<div></div>	0.10	0.06
Udder Support	<div></div>	0.47	0.19
Fore Udder	<div></div>	0.57	0.17
Rear Udder	<div></div>	0.44	0.23
Front Teat	<div></div>	0.13	0.03
Rear Teat	<div></div>	0.11	0.17
Udder Overall	<div></div>	0.57	0.22
Dairy Conformation	<div></div>	0.46	0.23



A1A1

MACCA X FIRENZE X MURMER

108 Dtrs, 29 herds

	NZMI	BW	LONG.	L/WEIGHT	%HEALTH	%EFF.
BV	293	220	202	1.7	2	10
BA	175	155	246	-5.5		
	MILK	PR.	PR%	FAT	FAT%	F +PR Kgs
BV	864	33.8	3.8	38.3	4.7	72.1
BA	213	18.1	4.0	19.1	5.0	
	FERT	BCS	SCS	CALVING	GEST. L	R.SURV.
BV	1.0	-.09	-.42	1.2	.3	-146
BA	.5	.03	.05	-.2	*2.6	48

Shed Traits

		BV	BA
Adaptability	<div></div>	0.17	0.17
Temperament	<div></div>	0.21	0.18
Milking Speed	<div></div>	-0.14	0.08
Overall Opinion	<div></div>	0.13	0.20

Conformation

87 dtrs TOP

		BV	BA
Stature	<div></div>	0.00	-0.10
Capacity	<div></div>	0.00	0.24
Rump Angle	<div></div>	0.20	-0.08
Rump Width	<div></div>	0.15	0.08
Legs	<div></div>	0.00	0.06
Udder Support	<div></div>	0.64	0.19
Fore Udder	<div></div>	0.50	0.17
Rear Udder	<div></div>	0.79	0.23
Front Teat	<div></div>	0.38	0.03
Rear Teat	<div></div>	0.20	0.17
Udder Overall	<div></div>	0.86	0.22
Dairy Conformation	<div></div>	0.11	0.23



KIWI CROSS



CRVTATAWAI F14:J2

aAa 561

CRVREDWOOD F13:J3

aAa 615

A2A2



BEAMER X MINTED X BLITZ

A2A2



KELSBELLS X MINTED X SOLARIS

	NZMI	BW	LONG.	L/WEIGHT	%HEALTH	%EFF.
BV	294	228	365	6.7	3	10
BA	175	155	246	-5.5		
MILK	PR.	PR%	FAT	FAT%	F +PR Kgs	
BV	765	39.6	4.0	32.3	4.7	71.9
BA	213	18.1	4.0	19.1	5.0	
FERT	BCS	SCS	CALVING	GEST. L	R.SURV.	
BV	-.6	.06	.11	.7	-6.0	38
BA	.5	.03	.05	-.2	*2.6	48

	NZMI	BW	LONG.	L/WEIGHT	%HEALTH	%EFF.
BV	247	167	481	12.1	6	7
BA	175	155	246	-5.5		
MILK	PR.	PR%	FAT	FAT%	F +PR Kgs	
BV	553	31.6	4.0	8.6	4.4	40
BA	213	18.1	4.0	19.1	5.0	
FERT	BCS	SCS	CALVING	GEST. L	R.SURV.	
BV	3.9	.21	-.36	1.1	-3.1	61
BA	.5	.03	.05	-.2	*2.6	48

Shed Traits

gBV BA

Adaptability		0.18	0.19
Temperament		0.17	0.18
Milking Speed		0.31	0.04
Overall Opinion		0.30	0.27

Conformation

0 dtrs TOP

Stature		0.06	1.01
Capacity		0.67	0.15
Rump Angle		0.19	-0.02
Rump Width		0.36	0.41
Legs		0.05	-0.10
Udder Support		0.12	0.47
Fore Udder		0.14	0.33
Rear Udder		0.15	0.36
Front Teat		0.07	0.16
Rear Teat		0.31	0.39
Udder Overall		0.19	0.44
Dairy Conformation		0.61	0.29

Shed Traits

gBV BA

Adaptability		0.53	0.17
Temperament		0.40	0.18
Milking Speed		0.20	0.08
Overall Opinion		0.53	0.20

Conformation

0 dtrs TOP

Stature		0.24	-0.10
Capacity		0.33	0.24
Rump Angle		-0.36	-0.08
Rump Width		0.14	0.08
Legs		-0.03	0.06
Udder Support		0.37	0.19
Fore Udder		0.28	0.17
Rear Udder		0.24	0.23
Front Teat		0.31	0.03
Rear Teat		0.33	0.17
Udder Overall		0.48	0.22
Dairy Conformation		0.29	0.23



KIWI CROSS



CRVTEANAU J9:F7

aAa —

CRVUNIFY PP J11:F4

aAa 654



BEAMER X MINTED X MANHATTAN



CRUISER P X CHECKPOINT X TEMPLE

68Dtrs, 13 herds

	NZMI	BW	LONG.	L/WEIGHT	%HEALTH	%EFF.
BV	252	237	339	-44.9	4	10
BA	175	155	246	-5.5		
	MILK	PR.	PR%	FAT	FAT%	F +PR Kgs
BV	47	14.7	4.1	22.8	5.2	37.5
BA	213	18.1	4.0	19.1	5.0	
	FERT	BCS	SCS	CALVING	GEST. L	R.SURV.
BV	3.0	-.01	.06	.8	-3.4	46
BA	.5	.03	.05	-.2	*2.6	48

	NZMI	BW	LONG.	L/WEIGHT	%HEALTH	%EFF.
BV	137	162	266	-16.8	4	5
BA	175	155	246	-5.5		
	MILK	PR.	PR%	FAT	FAT%	F +PR Kgs
BV	-284	4.3	4.1	18.2	5.5	22.5
BA	213	18.1	4.0	19.1	5.0	
	FERT	BCS	SCS	CALVING	GEST. L	R.SURV.
BV	.6	.07	.26	-.9	-1.5	142
BA	.5	.03	.05	-.2	*2.6	48

Shed Traits

	BV	BA
Adaptability	0.22	0.17
Temperament	0.23	0.18
Milking Speed	0.35	0.08
Overall Opinion	0.34	0.20

Conformation

	64 dtrs TOP
Stature	-0.86 -0.10
Capacity	0.25 0.24
Rump Angle	0.14 -0.08
Rump Width	0.06 0.08
Legs	0.12 0.06
Udder Support	0.56 0.19
Fore Udder	0.64 0.17
Rear Udder	0.34 0.23
Front Teat	0.53 0.03
Rear Teat	0.50 0.17
Udder Overall	0.69 0.22
Dairy Conformation	0.19 0.23

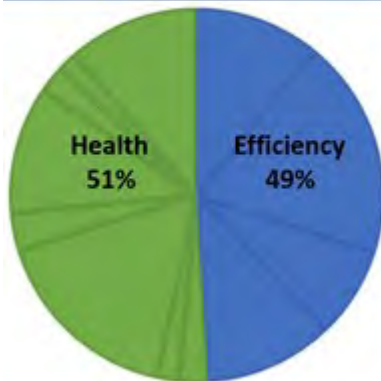
Shed Traits

	gBV	BA
Adaptability	0.58	0.17
Temperament	0.59	0.18
Milking Speed	0.16	0.08
Overall Opinion	0.58	0.20

Conformation

	0 dtrs TOP
Stature	-0.43 -0.10
Capacity	0.42 0.24
Rump Angle	-0.08 -0.08
Rump Width	0.05 0.08
Legs	0.01 0.06
Udder Support	0.07 0.19
Fore Udder	0.02 0.17
Rear Udder	-0.06 0.23
Front Teat	0.16 0.03
Rear Teat	0.15 0.17
Udder Overall	0.04 0.22
Dairy Conformation	0.36 0.23

NZMI 2020



BW 2020



Tasmania

Mark Handley 0448 487264

mark@vandiemen genetics.com.au

Jake Handley 0477 137778

jake@vandiemen genetics.com.au

Mainland

Jan Simpson 0427 741199

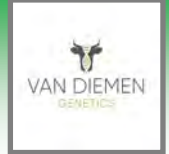
jan@vandiemen genetics.com.au

Mike Green 0400 385514

mike@vandiemen genetics.com.au



JERSEY



CRVCARRICK

aAa 561



A2A2

KINGPIN X MURMER X MAUMAU

123 Dtrs, 46 herds

	NZMI	BW	LONG.	L/WEIGHT	%HEALTH	%EFF.
BV	313	321	477	-35.9	8	10
BA	129	165	158	-54.0		
	MILK	PR.	PR%	FAT	FAT%	F +PR Kgs
BV	-252	13.3	4.3	31.6	5.7	44.9
BA	-406	-.6	4.1	9.7	5.4	
	FERT	BCS	SCS	CALVING	GEST. L	R.SURV.
BV	4.5	.08	-.45	-1.7	.4	50
BA	1.4	.04	-.08	-2.1	-1.0	-18

Shed Traits

	BV	BA
Adaptability	0.42	0.16
Temperament	0.43	0.18
Milking Speed	0.10	0.11
Overall Opinion	0.48	0.15

Conformation

	78 dtrs TOP
Stature	-0.50 -0.88
Capacity	0.55 0.15
Rump Angle	0.17 -0.09
Rump Width	-0.01 -0.21
Legs	-0.06 0.10
Udder Support	0.44 0.10
Fore Udder	0.56 0.27
Rear Udder	0.61 0.32
Front Teat	0.32 0.07
Rear Teat	0.35 -0.13
Udder Overall	0.68 0.28
Dairy Conformation	0.48 0.14

CRVCONNACHT

aAa 561



A2A2

KINGPIN X MURMER X MAUMAU

1979 Dtrs, 385 herds

	NZMI	BW	LONG.	L/WEIGHT	%HEALTH	%EFF.
BV	280	335	426	-42.9	7	10
BA	129	165	158	-54.0		
	MILK	PR.	PR%	FAT	FAT%	F +PR Kgs
BV	-506	6.0	4.4	34.9	6.2	40.9
BA	-406	-.6	4.1	9.7	5.4	
	FERT	BCS	SCS	CALVING	GEST. L	R.SURV.
BV	2.9	.17	-.45	-.8	-1.4	33
BA	1.4	.04	-.08	-2.1	-1.0	-18

Shed Traits

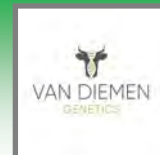
	BV	BA
Adaptability	0.16	0.16
Temperament	0.17	0.18
Milking Speed	0.21	0.11
Overall Opinion	0.28	0.15

Conformation

	150 dtrs TOP
Stature	-0.84 -0.88
Capacity	0.71 0.15
Rump Angle	0.03 -0.09
Rump Width	-0.66 -0.21
Legs	0.02 0.10
Udder Support	0.31 0.10
Fore Udder	0.47 0.27
Rear Udder	0.64 0.32
Front Teat	0.01 0.07
Rear Teat	-0.25 -0.13
Udder Overall	0.55 0.28
Dairy Conformation	0.55 0.14



JERSEY



CRVFLORIN

aAa —

CRVCOASTAL

aAa 561

A2A2



MAGNIFICENT X TERRIFIC X HEADSTART

A2A2



KINGPIN X MURMER X MAUMAU

219 Dtrs, 73 herds

	NZMI	BW	LONG.	L/WEIGHT	%HEALTH	%EFF.
BV	261	273	392	-38.9	9	8
BA	129	165	158	-54.0		
	MILK	PR.	PR%	FAT	FAT%	F +PR Kgs
BV	-484	4.1	4.3	21.9	5.8	26.0
BA	-406	-.6	4.1	9.7	5.4	
	FERT	BCS	SCS	CALVING	GEST. L	R.SURV.
BV	5.9	.23	-.14	-1.1	-4	-2
BA	1.4	.04	-.08	-2.1	-1.0	-18

	NZMI	BW	LONG.	L/WEIGHT	%HEALTH	%EFF.
BV	302	324	452	-60	6	12
BA	129	165	158	-54.0		
	MILK	PR.	PR%	FAT	FAT%	F +PR Kgs
BV	-218	12.0	4.3	28.0	5.6	40
BA	-406	-.6	4.1	9.7	5.4	
	FERT	BCS	SCS	CALVING	GEST. L	R.SURV.
BV	6.0	.20	.15	-2.2	-1.4	3
BA	1.4	.04	-.08	-2.1	-1.0	-18

Shed Traits

gBV BA

Adaptability		0.51	0.16
Temperament		0.50	0.18
Milking Speed		0.27	0.11
Overall Opinion		0.49	0.15

Conformation

0 dtrs TOP

Stature		-0.84	-0.88
Capacity		0.66	0.15
Rump Angle		-0.11	-0.09
Rump Width		-0.15	-0.21
Legs		0.01	0.10
Udder Support		0.75	0.10
Fore Udder		0.94	0.27
Rear Udder		0.97	0.32
Front Teat		0.00	0.07
Rear Teat		-0.18	-0.13
Udder Overall		0.98	0.28
Dairy Conformation		0.53	0.14

Shed Traits

BV BA

Adaptability		0.38	0.16
Temperament		0.36	0.18
Milking Speed		0.34	0.11
Overall Opinion		0.44	0.15

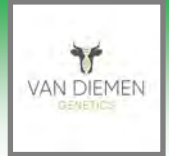
Conformation

51 dtrs TOP

Stature		-0.89	-0.88
Capacity		-0.08	0.15
Rump Angle		0.03	-0.09
Rump Width		-0.21	-0.21
Legs		0.01	0.10
Udder Support		0.55	0.10
Fore Udder		0.35	0.27
Rear Udder		0.78	0.32
Front Teat		0.40	0.07
Rear Teat		0.06	-0.13
Udder Overall		0.74	0.28
Dairy Conformation		0.13	0.14



JERSEY



CRVLUCAS

aAa 516



A2A2

MANZELLO X MAUNGA X INTEGRITY

CRVLYNDON

aAa 561



A2A2

TRIPLESTAR X SUPERSTITION X CAPS GOLDIE

135 Dtrs, 49 herds

	NZMI	BW	LONG.	L/WEIGHT	%HEALTH	%EFF.
BV	275	271	404	-27.1	8	10
BA	129	165	158	-54.0		
	MILK	PR.	PR%	FAT	FAT%	F +PR Kgs
BV	-406	16.6	4.1	32.8	5.4	49.4
BA	-406	-.6	4.1	9.7	5.4	
	FERT	BCS	SCS	CALVING	GEST. L	R.SURV.
BV	.4	.04	-.43	-2.9	2.1	92
BA	1.4	.04	-.08	-2.1	-1.0	-18

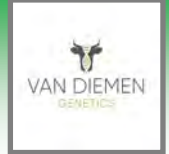
Shed Traits		BV	BA
Adaptability	<div></div>	0.76	0.16
Temperament	<div></div>	0.73	0.18
Milking Speed	<div></div>	0.60	0.11
Overall Opinion	<div></div>	0.87	0.15
Conformation		81 dtrs TOP	
Stature	<div></div>	-0.44	-0.88
Capacity	<div></div>	0.64	0.15
Rump Angle	<div></div>	-0.23	-0.09
Rump Width	<div></div>	-0.04	-0.21
Legs	<div></div>	0.03	0.10
Udder Support	<div></div>	0.14	0.10
Fore Udder	<div></div>	0.45	0.27
Rear Udder	<div></div>	0.63	0.32
Front Teat	<div></div>	-0.02	0.07
Rear Teat	<div></div>	-0.31	-0.13
Udder Overall	<div></div>	0.46	0.28
Dairy Conformation	<div></div>	0.78	0.14

	NZMI	BW	LONG.	L/WEIGHT	%HEALTH	%EFF.
BV	271	288	258	-25.6	6	10
BA	129	165	158	-54.0		
	MILK	PR.	PR%	FAT	FAT%	F +PR Kgs
BV	44	17.5	4.1	40.1	5.6	57.6
BA	-406	-.6	4.1	9.7	5.4	
	FERT	BCS	SCS	CALVING	GEST. L	R.SURV.
BV	-.2	.18	-.05	-2.6	-.5	-65
BA	1.4	.04	-.08	-2.1	-1.0	-18

Shed Traits		gBV	BA
Adaptability	<div></div>	0.48	0.16
Temperament	<div></div>	0.48	0.18
Milking Speed	<div></div>	0.41	0.11
Overall Opinion	<div></div>	0.55	0.15
Conformation		0 dtrs TOP	
Stature	<div></div>	-0.62	-0.88
Capacity	<div></div>	0.86	0.15
Rump Angle	<div></div>	-0.11	-0.09
Rump Width	<div></div>	0.01	-0.21
Legs	<div></div>	0.16	0.10
Udder Support	<div></div>	0.16	0.10
Fore Udder	<div></div>	0.35	0.27
Rear Udder	<div></div>	0.42	0.32
Front Teat	<div></div>	0.10	0.07
Rear Teat	<div></div>	-0.12	-0.13
Udder Overall	<div></div>	0.36	0.28
Dairy Conformation	<div></div>	0.66	0.14



JERSEY



CRVOMEGA

aAa 564



A2A2

TERRIFIC X ADMIRAL X CAPS GOLDIE

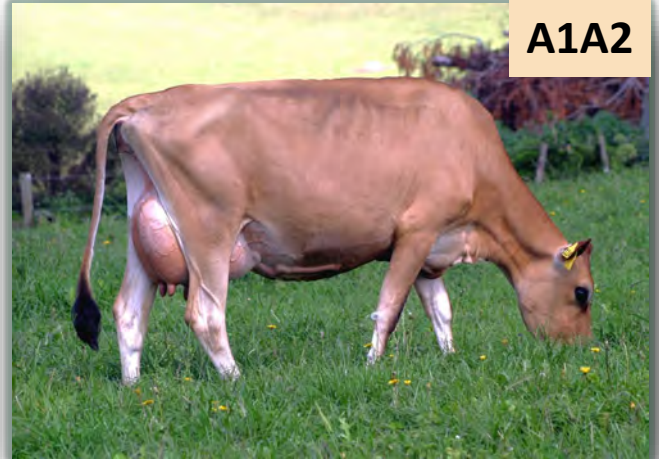
99 Dtrs, 35 herds

	NZMI	BW	LONG.	L/WEIGHT	%HEALTH	%EFF.
BV	299	287	331	-30.3	5	11
BA	129	165	158	-54.0		
	MILK	PR.	PR%	FAT	FAT%	F +PR Kgs
BV	114	18.0	4.1	36.8	5.4	54.8
BA	-406	-.6	4.1	9.7	5.4	
	FERT	BCS	SCS	CALVING	GEST. L	R.SURV.
BV	1.2	.16	-.04	-.6	-3.2	-18
BA	1.4	.04	-.08	-2.1	-1.0	-18

Shed Traits		BV	BA
Adaptability	<div></div>	0.08	0.16
Temperament	<div></div>	0.07	0.18
Milking Speed	<div></div>	0.14	0.11
Overall Opinion	<div></div>	0.12	0.15
Conformation		40 dtrs TOP	
Stature	<div></div>	-0.62	-0.88
Capacity	<div></div>	0.73	0.15
Rump Angle	<div></div>	-0.25	-0.09
Rump Width	<div></div>	-0.29	-0.21
Legs	<div></div>	0.09	0.10
Udder Support	<div></div>	0.88	0.10
Fore Udder	<div></div>	0.71	0.27
Rear Udder	<div></div>	1.31	0.32
Front Teat	<div></div>	0.20	0.07
Rear Teat	<div></div>	0.35	-0.13
Udder Overall	<div></div>	1.12	0.28
Dairy Conformation	<div></div>	0.82	0.14

CRVWALKER

aAa 423



A1A2

GUN OF A SUN X VALERIAN X MANZELLO

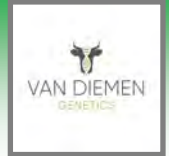
78 Dtrs, 39 herds

	NZMI	BW	LONG.	L/WEIGHT	%HEALTH	%EFF.
BV	227	237	244	-44.5	4	10
BA	129	165	158	-54.0		
	MILK	PR.	PR%	FAT	FAT%	F +PR Kgs
BV	-34	14.0	41	25.2	5.3	39.2
BA	-406	-.6	4.1	9.7	5.4	
	FERT	BCS	SCS	CALVING	GEST. L	R.SURV.
BV	.3	-.06	-.33	-2.1	-.3	-13
BA	1.4	.04	-.08	-2.1	-1.0	-18

Shed Traits		BV	BA
Adaptability	<div></div>	0.35	0.16
Temperament	<div></div>	0.41	0.18
Milking Speed	<div></div>	-0.06	0.11
Overall Opinion	<div></div>	0.38	0.15
Conformation		37 dtrs TOP	
Stature	<div></div>	-0.68	-0.88
Capacity	<div></div>	-0.10	0.15
Rump Angle	<div></div>	0.23	-0.09
Rump Width	<div></div>	-0.30	-0.21
Legs	<div></div>	0.08	0.10
Udder Support	<div></div>	0.26	0.10
Fore Udder	<div></div>	0.08	0.27
Rear Udder	<div></div>	0.55	0.32
Front Teat	<div></div>	-0.02	0.07
Rear Teat	<div></div>	0.14	-0.13
Udder Overall	<div></div>	0.31	0.28
Dairy Conformation	<div></div>	0.06	0.14



JERSEY



CRVQUIZ

aAa —

CRVKINGPIN

aAa 543



A2A2

DEGREE X NEVVY X MANHATTAN

108 Dtrs, 33 herds

	NZMI	BW	LONG.	L/WEIGHT	%HEALTH	%EFF.
BV	314	346	263	-36.7	3	12
BA	129	165	158	-54.0		
	MILK	PR.	PR%	FAT	FAT%	F +PR Kgs
BV	186	22.6	4.1	47.7	5.6	70.3
BA	-406	-.6	4.1	9.7	5.4	
	FERT	BCS	SCS	CALVING	GEST. L	R.SURV.
BV	3.7	.10	-.07	-1.9	-3.7	-197
BA	1.4	.04	-.08	-2.1	-1.0	-18

Shed Traits

BV BA

Adaptability		0.04	0.16
Temperament		0.00	0.18
Milking Speed		0.13	0.11
Overall Opinion		0.10	0.15

Conformation

45 dtrs TOP

Stature		-0.62	-0.88
Capacity		0.20	0.15
Rump Angle		-0.27	-0.09
Rump Width		-0.23	-0.21
Legs		0.16	0.10
Udder Support		0.13	0.10
Fore Udder		0.10	0.27
Rear Udder		0.47	0.32
Front Teat		-0.17	0.07
Rear Teat		-0.43	-0.13
Udder Overall		0.27	0.28
Dairy Conformation		0.18	0.14



A2A2

MURMER X LIKEABLE X MANHATTAN

4464 Dtrs, 802herds

	NZMI	BW	LONG.	L/WEIGHT	%HEALTH	%EFF.
BV	264	243	444	-50.5	7	11
BA	129	165	158	-54.0		
	MILK	PR.	PR%	FAT	FAT%	F +PR Kgs
BV	95	16	4.1	18.4	5.0	34.4
BA	-406	-.6	4.1	9.7	5.4	
	FERT	BCS	SCS	CALVING	GEST. L	R.SURV.
BV	.1	-.05	-.69	-1.1	-.8	145
BA	1.4	.04	-.08	-2.1	-1.0	-18

Shed Traits

BV BA

Adaptability		0.74	0.16
Temperament		0.79	0.18
Milking Speed		-0.01	0.11
Overall Opinion		0.67	0.15

Conformation

557 dtrs TOP

Stature		-0.82	-0.88
Capacity		0.40	0.15
Rump Angle		0.08	-0.09
Rump Width		-0.33	-0.21
Legs		0.16	0.10
Udder Support		0.28	0.10
Fore Udder		0.50	0.27
Rear Udder		0.64	0.32
Front Teat		0.07	0.07
Rear Teat		-0.05	-0.13
Udder Overall		0.60	0.28
Dairy Conformation		0.44	0.14