

VDG Global Holsteins



Distributors of IPS,CRV & Samen Holstein Sires Australia Wide



Tasmania

Mark Handley 0448 487264

mark@vandiemengenetics.com.au

Jake Handley 0477 137778

jake@vandiemengenetics.com.au

Mainland

Jan Simpson 0427 741199

jan@vandiemengenetics.com.au

Mike Green 0400 385514

mike@vandiemengenetics.com.au



DELTANIPPONP

RRP \$28



Available Sexed

Delta Nippon P

Hotspot P *Endco Superhero*
Wil Herz P
 Delta Nadine *VH Bube Bernell*
Deltal Nayat

BPI 403 - HWI 337 - TWI 396

No. 1 Polled Sire



Alex Arkink

A2A2 aAa 321

MAMMARY

Udder Texture	96
Udder Depth	106
Fore Attachment	103
Rear Attach H.	106
Rear Attach W	95
Centre Ligament	100
Teat Place Front	103
Teat Place Rear	99
Teat Length	96

STRENGTH

Stature	102
Bone Quality	102
Angularity	97
Muzzle W	100
Body Depth	96
Chest width	100

RUMP

Pin width	104
Pin set	109
Loin	104

F&L

Foot Angle	97
Heel Depth	101
Rear set	96
Rear Leg View	108

HEALTH

Survival	114
Calving Ease	104
Cell Count	164
Daughter Fert	112
Liveweight	100
Heat Tolerance	92
Mastitis Res.	106

BPI	Overall Type	Mammary	Feet & Legs Composite	Rump Composite	Dairy Strength
403	106	102	104	105	99
Milking Speed		102	BPI 403 ASI 197		
Temperament		102	PR	PR%	MILK FAT FAT%
Likeability		105	29	0.37	358 18 0.03

Great Protein % Great Type Composites

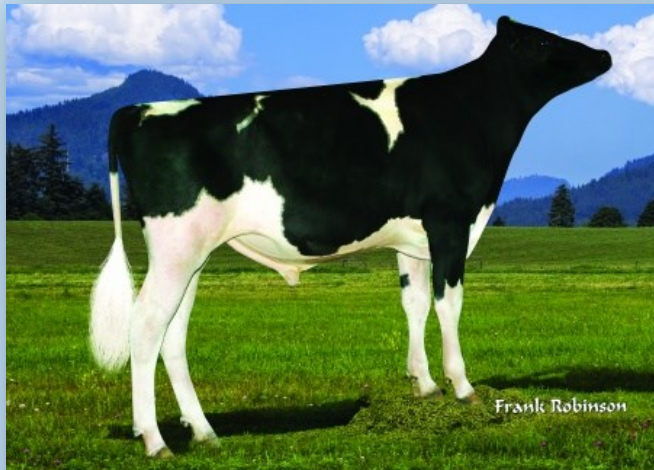
Excellent Health Traits Calving Ease

Will improve Rumps Daughter Calving Ease

Lactation Persistency Less ketosis



Alex Arkink



566HO1313 DOUBLE-EAGLE GRNTE

COMIC -ET

Sire: Westcoast Guarantee-ET

Dam: Double-Eagle Duke

Connie-ET "GP-84" VG-MS

BPI— Health Traits & High Fat%

A2A2 aAa 213

MAMMARY

Udder Texture	102
Udder Depth	108
Fore Attachment	105
Rear Attach H.	103
Rear Attach W	97
Centre Ligament	105
Teat Place Front	98
Teat Place Rear	99
Teat Length	98

STRENGTH

Stature	100
Bone Quality	102
Angularity	95
Muzzle W	100
Body Depth	92
Chest width	94

RUMP

Pin width	100
Pin set	94
Loin	96

F&L

Foot Angle	99
Heel Depth	102
Rear set	105
Rear Leg View	100

HEALTH

Survival	112
Calving Ease	103
Cell Count	174
Daughter Fert	113
Liveweight	96
Heat Tolerance	101
Mastitis Res.	108

BPI	Overall Type	Mammary	Feet & Legs Composite	Rump Composite	Dairy Strength
358	103	102	102	99	94
Milking Speed		102	BPI 358 ASI 159		
Temperament		102	PR	PR%	MILK FAT FAT%
Likeability		104	18	0.19	297 36 0.34

High Fat %

Excellent Health Traits Good Feet & Legs

Great Daughter Fertility Easy Calving



566HO1313 COMIC Grandam:
Cookiecutter Shmrk Haze-ET "EX-90" DOM



CRV SHERO

RRP \$22



Available Sexed

PEAK SHERO

Endco Superhero
Bryhil Ransom Maquie

BPI - Calving Ease

Heifer Mating Sire



©Ella Wright

A2A2 aAa 312

MAMMARY	Udder Texture	101	BPI	Overall Type	Mammary	Feet & Legs Composite	Rump Composite	Dairy Strength
	Udder Depth	103						
	Fore Attachment	102						
	Rear Attach H.	103						
	Rear Attach W	96						
	Centre Ligament	103						
	Teat Place Front	103						
Teat Place Rear	101							
STRENGTH	Teat Length	92						
	Stature	104						
	Bone Quality	102						
	Angularity	98						
RUMP	Muzzle W	97						
	Body Depth	97						
	Chest width	99						
	Pin width	100						
F&L	Pin set	100						
	Loin	102						
	Foot Angle	94						
	Heel Depth	98						
HEALTH	Rear set	99						
	Rear Leg View	99						
	Survival	111						
	Calving Ease	105						
	Cell Count	183						
	Daughter Fert	110						
	Liveweight	101						
	Heat Tolerance	101						
	Mastitis Res.	107						

349	102	102	97	102	98	
Milking Speed			102	BPI 349 ASI 163		
Temperament			104	PR	PR%	MILK
Likeability			105	22	0.23	355
				FAT	FAT%	
				26	0.16	


Positive Components

Excellent Health Traits 105 Calving Ease

Will improve Rumps Daughter Calving Ease

Lactation Persistency Less ketosis

Exc. Temperament



Both Herds

Positive Components

Excellent Health Traits 105 Calving Ease

Will improve Rumps Daughter Calving Ease

Lactation Persistency Less ketosis

Exc. Temperament



Both Horses



CRVHOTLINE

RRP \$24



Glen D Haven Altahtrod

PEAK HOTLINE

J Mor Mogul Hostice ET

BPI 335 - HWI 232 - TWI 402

TYPE 114 MAMMARY 114

Conformation

335 dtrs 149 herds reliability: 96%

PTAT	2.89
U Comp	1.93
F&L Comp	1.59

A2A2 aAa 321

			BPI	Overall Type	Mammary	Feet & Legs Composite	Rump Composite	Dairy Strength		
M	Udder Texture	106								
A	Udder Depth	107								
M	Fore Attachment	111	335	114	114	107	105	99		
M	Rear Attach H.	111								
A	Rear Attach W	101								
R	Centre Ligament	112								
Y	Teat Place Front	109								
	Teat Place Rear	112								
	Teat Length	91								
S	Stature	114								
T	Bone Quality	110								
R	Angularity	107								
E	Muzzle W	103								
N	Body Depth	100								
G	Chest width	99								
T										
H										
R	Pin width	103								
U	Pin set	96								
M	Loin	103								
P										
	Foot Angle	108								
F	Heel Depth	105								
&	Rear set	94								
L	Rear Leg View	113								
	Survival	109								
H	Calving Ease	103								
E	Cell Count	139								
A	Daughter Fert	101								
L	Liveweight	109								
T	Heat Tolerance	92								
H	Mastitis Res.	102								

Milking Speed	103
Temperament	101
Likeability	105

BPI 335		ASI 241		
PR	PR%	MILK	FAT	FAT%
30	0.25	602	53	0.40

Great fat %

Excellent Composites

Calving Ease Good Locomotion

Fast Milking





CRVSLADE

RRP \$22

Available Sexed



LEXVOLD SLADE

Bomaz Altarobson
Kock Delta Asteroid

Edg Rubicon
Bomaz Bob 6207
Mr Mogul Delta 1427
Aderyn Asteroid 2002 ET

*Great Mammary
& Strength*

A2A2 aAa 345

MAMMARY

Udder Texture	99
Udder Depth	105
Fore Attachment	106
Rear Attach H.	107
Rear Attach W	104
Centre Ligament	100
Teat Place Front	98
Teat Place Rear	100
Teat Length	95

STRENGTH

Stature	103
Bone Quality	100
Angularity	97
Muzzle W	102
Body Depth	98
Chest width	101

RUMP

Pin width	98
Pin set	97
Loin	100

F&L

Foot Angle	101
Heel Depth	101
Rear set	98
Rear Leg View	105

HEALTH

Survival	110
Calving Ease	102
Cell Count	171
Daughter Fert	107
Liveweight	102
Heat Tolerance	99
Mastitis Res.	108

BPI	Overall Type	Mammary	Feet & Legs Composite	Rump Composite	Dairy Strength
330	104	105	102	99	99

Milking Speed	101
Temperament	103
Likeability	106

BPI 330		ASI 179		
PR	PR%	MILK	FAT	FAT%
19	0.30	124	32	0.39

Great Fat %

Good Health Traits Great Mammary
Strong Feet & Legs Lactation Persistency
Less ketosis Good Temperament





DELTA MAGISTER

Flevo Genetics Whatsapp
Delta Magic

Seagull Bay Supersire
Khw Super Aderyn
Delta Direct
Delta Marge

Chest & Muzzle Width
Good Rump Angle



High Conception Semen

PROVEN reliable data—409 daughters

A2A2 aAa 156

MAMMARY

Udder Texture	92
Udder Depth	102
Fore Attachment	101
Rear Attach H.	106
Rear Attach W	98
Centre Ligament	102
Teat Place Front	108
Teat Place Rear	106
Teat Length	97

STRENGTH

Stature	98
Bone Quality	97
Angularity	98
Muzzle W	104
Body Depth	96
Chest width	101

RUMP

Pin width	98
Pin set	109
Loin	100

F&L

Foot Angle	103
Heel Depth	98
Rear set	96
Rear Leg View	99

HEALTH

Survival	111
Calving Ease	103
Cell Count	156
Daughter Fert	106
Liveweight	98
Heat Tolerance	94
Mastitis Res.	105

BPI	Overall Type	Mammary	Feet & Legs Composite	Rump Composite	Dairy Strength
317	99	104	98	100	98
Milking Speed		104	BPI 317 ASI 159		
Temperament		103	PR	PR%	MILK FAT FAT%
Likeability		103	24	0.26	361 18 0.04

Front End Strength

Positive Protein % Good Health Traits
Great Mammary Fast Milking
Great Rump Angle Daughter calving Ease
Lactation Persistency Less ketosis





AVICII Araxis x Montross x Numero Uno

Shorter Stature
Quality Type



A2A2 aAa 435

			BPI Overall Type Mammary Feet & Legs Composite Rump Composite Dairy Strength					
			309	107	108	102	98	99
MAMMARY	Udder Texture	105	Milking Speed		104	BPI 309		ASI 145
	Udder Depth	107	Temperament		101	PR	PR%	MILK
	Fore Attachment	103	Likeability		104	22	0.18	463
	Rear Attach H.	111				FAT	FAT%	
	Rear Attach W	98				22	0.03	
STRENGTH	Centre Ligament	108	<p>Great Overall Type</p> <p>Great Mammary Scores Fast Milking</p> <p>Good Health Traits Good Feet & Legs</p> <p>Strength in balance with Shorter stature</p>					
	Teat Place Front	106						
	Teat Place Rear	103						
	Teat Length	98						
	Stature	98						
RUMP	Bone Quality	105						
	Angularity	98						
	Muzzle W	97						
F&L	Body Depth	98						
	Chest width	102						
	Pin width	98						
HEALTH	Pin set	96						
	Loin	96						
	Foot Angle	99						
HEALTH	Heel Depth	106						
	Rear set	100						
	Rear Leg View	100						
	Survival	109						
	Calving Ease	103						
HEALTH	Cell Count	147						
	Daughter Fert	108						
	Liveweight	98						
	Heat Tolerance	96						
HEALTH	Mastitis Res.	102						



GGGrandam Sully Shottle May –TW Ex. 91



PEAK EASTON

Sire: Zahbulls Alta1stclass-ET
Dam: Miller-Ff Ssire Exotic-ET VG-86

*Type Composites—Health
High Fat%*

PROVEN Reliable Data

A2A2 aAa 321


MAMMARY	Udder Texture	101	BPI	Overall Type	Mammary	Feet & Legs Composite	Rump Composite	Dairy Strength				
	Udder Depth	110										
	Fore Attachment	104										
	Rear Attach H.	108										
	Rear Attach W	99										
STRENGTH	Centre Ligament	101	Milking Speed		102	BPI 309 ASI 159						
	Teat Place Front	97	Temperament		103	PR PR% MILK FAT FAT%						
	Teat Place Rear	96	Likeability		104	15 0.18 203 35 0.38						
	Teat Length	93										
RUMP	Stature	105	High Fat %									
	Bone Quality	101	Excellent Health Traits Good Mammary									
	Angularity	101	Good Overall Type Good Feet & Legs									
	Muzzle W	94	Very Easy Calving Good Workability traits.									
	Body Depth	96										
F&L	Chest width	97										
	Pin width	97										
	Pin set	101										
	Loin	96										
	Foot Angle	98										
HEALTH	Heel Depth	103										
	Rear set	96										
	Rear Leg View	105										
	Survival	112										
	Calving Ease	104										
	Cell Count	176										
	Daughter Fert	106										
	Liveweight	102										
	Heat Tolerance	102										
	Mastitis Res.	105										

High Fat %

Excellent Health Traits Good Mammary

Good Overall Type Good Feet & Legs

Very Easy Calving Good Workability traits.



MGD: Nova Shottle Evelyn-ET

High Fat %

Excellent Health Traits Good Mammary
Good Overall Type Good Feet & Legs
Very Easy Calving Good Workability traits.





566HO1293 LADYS-MANOR BAND

SEASAW -ET

Sire: Wa-Del Yoder Bandares-ET

Dam: Ladys-Manor SSH Seashell-ET "VG-85"

*Good Overall Type
& Mammary*

A2A2 aAa 423

**M
A
M
M
A
R
Y**

Udder Texture	103
Udder Depth	107
Fore Attachment	107
Rear Attach H.	109
Rear Attach W	95
Centre Ligament	103
Teat Place Front	102
Teat Place Rear	101
Teat Length	94

**S
T
R
E
N
G
T
H**

Stature	99
Bone Quality	99
Angularity	95
Muzzle W	101
Body Depth	91
Chest width	97

**R
U
M
P**

Pin width	98
Pin set	98
Loin	94

**F
&
L**

Foot Angle	97
Heel Depth	102
Rear set	93
Rear Leg View	104

**H
E
A
L
T
H**

Survival	110
Calving Ease	103
Cell Count	168
Daughter Fert	109
Liveweight	96
Heat Tolerance	101
Mastitis Res.	107

BPI	Overall Type	Mammary	Feet & Legs Composite	Rump Composite	Dairy Strength
295	103	105	103	97	94
Milking Speed		102	BPI 295 ASI 104		
Temperament		103	PR	PR%	MILK FAT FAT%
Likeability		105	21	0.06	662 14 -0.20

Great Mammary Scores

Good Health Traits Good Feet & Legs

Strength in balance with Moderate Stature

Good Workability Traits





566HO1315 SCHILLVIEW ACHIEVER

GOAL -ET

Sire: ABS Achiever-ET
Dam: Schillview Delta Gentle "VG-86"

Very Good Composites

A2A2 aAa 432

**M
A
M
M
A
R
Y**

Udder Texture	99
Udder Depth	102
Fore Attachment	105
Rear Attach H.	106
Rear Attach W	105
Centre Ligament	102
Teat Place Front	108
Teat Place Rear	105
Teat Length	97

**S
T
R
E
N
G
T
H**

Stature	99
Bone Quality	101
Angularity	99
Muzzle W	102
Body Depth	99
Chest width	101

**R
U
M
P**

Pin width	98
Pin set	100
Loin	103

**F
&
L**

Foot Angle	99
Heel Depth	100
Rear set	98
Rear Leg View	103

**H
E
A
L
T
H**

Survival	105
Calving Ease	102
Cell Count	155
Daughter Fert	105
Liveweight	99
Heat Tolerance	94
Mastitis Res.	108

BPI	Overall Type	Mammary	Feet & Legs Composite	Rump Composite	Dairy Strength
267	103	108	100	101	100
Milking Speed		101	BPI 267 ASI 145		
Temperament		101	PR	PR%	MILK FAT FAT%
Likeability		102	13	0.15	184 41 0.48

High Fat Kgs %

Good Overall Balance Great Mammary Scores

Good Health Traits Good Feet & Legs

Good Rumps



DAM: Schillview Delta Gentle VG-86



566HO1303 MISTY-MOOR

PORSCHÉ -ET

Sire: DG Charley
Dam: Misty-Moor Delta
Pailou-ET "VG-86"

*Shorter Stature
with Strength*

A2A2 aAa 315

			BPI	Overall Type	Mammary	Feet & Legs Composite	Rump Composite	Dairy Strength
MAMMARY	Udder Texture	101						
	Udder Depth	106						
	Fore Attachment	104						
	Rear Attach H.	109						
	Rear Attach W	99						
	Centre Ligament	101						
	Teat Place Front	103						
	Teat Place Rear	101						
STRENGTH	Teat Length	97						
	Stature	98						
	Bone Quality	102						
	Angularity	99						
	Muzzle W	104						
RUMP	Body Depth	99						
	Chest width	97						
	Pin width	92						
FEET & LEGS	Pin set	93						
	Loin	96						
	Foot Angle	98						
HEALTH	Heel Depth	100						
	Rear set	97						
	Rear Leg View	106						
HEALTH	Survival	109						
	Calving Ease	102						
	Cell Count	169						
	Daughter Fert	110						
	Liveweight	97						
HEALTH	Heat Tolerance	99						
	Mastitis Res.	105						

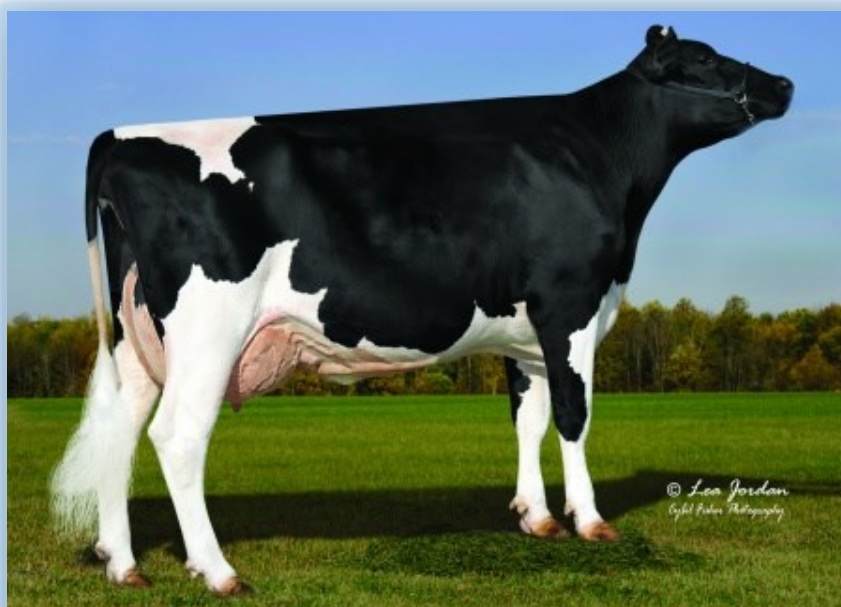
Milking Speed	99	BPI 251 ASI 90				
Temperament	102	PR	PR%	MILK	FAT	FAT%
Likeability	103	18	0.02	616	16	-0.15

aAa 315—Open, Dairy, Smooth

Great Mammary Scores

Good Health Traits Good Feet & Legs

Balanced strength and Stature





566HO1333 CHERRY-LILY

LIVE NOW *PP

Sire ABS Presley– PP ET
Dam: Cherry-Lily Bdares
Limba-ET "GP-81"

POLLED A2A2

High Fat kgs

A2A2 aAa 246

MAMMARY

Udder Texture	100
Udder Depth	106
Fore Attachment	105
Rear Attach H.	111
Rear Attach W	99
Centre Ligament	105
Teat Place Front	103
Teat Place Rear	107
Teat Length	92

STRENGTH

Stature	99
Bone Quality	104
Angularity	95
Muzzle W	100
Body Depth	96
Chest width	99

RUMP

Pin width	97
Pin set	94
Loin	98

F&L

Foot Angle	99
Heel Depth	102
Rear set	95
Rear Leg View	97

HEALTH

Survival	108
Calving Ease	103
Cell Count	156
Daughter Fert	108
Liveweight	98
Heat Tolerance	98
Mastitis Res.	104

BPI	Overall Type	Mammary	Feet & Legs Composite	Rump Composite	Dairy Strength
312	104	107	100	96	99

Milking Speed	104
Temperament	102
Likeability	104

BPI 312		ASI	140		
PR	PR%	MILK	FAT	FAT%	
13	0.09	310	45	0.46	

High Fat Kgs %

Great Mammary Scores

Good Health Traits Good Feet & Legs

Easy Calving Fast Milking



566HO1333 LIVE NOW *PP Grandam:
Cherry-Lor Outline Lime-ET "EX-90"



3rd DAM: Benner Lexor Joray "VG-86"



GTPI	PR	PR%	MILK	FAT	FAT%
2557	42	-0.04	1712	35	-0.10
TYPE	UDC	F & L	NM\$	CM\$	GM\$
1.61	1.47	0.43	438	423	393
C/E	DPR	PL	LIV	SCS	EFI
1.9%	0.5	3.5	1.3	3.00	8.5%

Milking Speed	103	aAa 234
Temp	101	A1A2

OFFSPRING—ALL POLLED

Balanced Conformation

Great Udders

Positive Teat Length

566HO1320 SUGAR-C

JUST IN TIME -ET *RC *PP

Sire: Holyland Simplicity-P-RC-ET

Dam: Sugar-C Zipit-P Jojane "VG-85"

MGS: OCD Eraser Zipit-P-ET

MGD: S-S-I Powerbl Joray 9892-ET "VG-88"

3rd Dam: Benner Lexor Joray "VG-86"

4th Dam: Benner Superstition Jalyn "VG-85"

5th Dam: Benner Baxter Jester-ET "VG-87"

6th Dam: Bennor Goldwyn Juzette "EX-91"

7th Dam: Benner Champion Jilly-ET "VG-85"

8th Dam: Benner Aeroline Jeraldine "EX-90" 2E

9th Dam: Benner Luke Jean-ET "VG-85"

	USDA	-2	-1	0	1	2
Stature	2.23T					
Strength	0.60S					
Body Depth	0.86D					
Dairy Form	1.38O					
Rump Angle	1.15S					
Rump Width	0.60W					
R Legs - Side View	0.90C					
R Legs - Rear View	0.52S					
Foot Angle	1.30S					
Feet & Legs Score	0.96H					
Fore Attachment	2.16S					
Rear Udder Height	2.15H					
Rear Udder Width	1.98W					
Udder Cleft	0.24S					
Udder Depth	2.30S					
F Teat Placement	0.40C					
R Teat Placement	0.50C					
Teat Length	0.52L					



Available Sexed



← RAMP UP DAUGHTERS



GTPI	PR	PR%	MILK	FAT	FAT%
2445	49	0.06	1060	61	0.07
TYPE	UDC	F & L	NM\$	CM\$	GM\$
0.53	0.22	-1.23	439	470	332
C/E	DPR	PL	LIV	SCS	EFI
2.1%	-2.6	1.7	-0.6	2.85	9.6%

Milking Speed	101	aAa 432
Temp	101	A2A2

BPI	Overall	Mamm	F & Legs	Rump	Dairy
266	100	103	93	105	95

	USDA	-2	-1	0	1	2
Stature	0.91T					
Strength	-0.13F					
Body Depth	0.87D					
Dairy Form	2.21O					
Rump Angle	1.57S					
Rump Width	0.28W					
R Legs - Side View	2.46C					
R Legs - Rear View	-1.57H					
Foot Angle	-1.45L					
Feet & Legs Score	-0.59L					
Fore Attachment	0.09S					
Rear Udder Height	0.88H					
Rear Udder Width	0.81W					
Udder Cleft	0.48S					
Udder Depth	-0.30D					
F Teat Placement	0.45C					
R Teat Placement	0.56C					
Teat Length	0.40L					

OFFSPRING—ALL POLLED

DAUGHTER PROVEN DATA

Good Conformation Daughter C/Ease 2%

566HO1259 ENDCO PB

RAMP UP -ET *RC *PP

Sire: View-Home Powerball-P-ET

Dam: Muranda Shan Raerae-ET *RC *PO "EX-90"

MGS: Ladys-Manor Man-O-Shan-ET

MGD: Erinwood Magnap Rae 1142 *RC *PO "EX-92"

3rd Dam: Erinwood Goldwyn Rae 1-ET "EX-92" 2E

4th Dam: Ma-Tom-Ba Aspen Rae 526 "EX-91"

5th Dam: Scientific Durh Re 400-ET "VG-87"

6th Dam: Scientific Charity Rae-ET "EX-91"

7th Dam: Hanoverhill Tony Rae "EX-96" 3E GMD, DOM

8th Dam: Hanoverhill TT Roxette "EX-94" 2E GMD, DOM

9th Dam: Mil-R-Mor Roxette "EX-CAN" GMD, DOM

Herdbook number	:	NL 872390502
A.I.-code	:	361096
Colour	:	black & white
Date of birth	:	27-07-2016
Breed	:	100% HF
Gestation length	:	276
Calving ease	:	105
Straw colour	:	clear blue
aAa code	:	153
Kappa casein	:	BB
Beta casein	:	A2/A2
C.V.M. / B.L.A.D.	:	Free / Free
C.D.H.	:	Free
Maternal line	:	Sandra

**BALU**

29-06-2014 DE 0538281295

**SANDRA 2**

23-08-2014 NL 755188309
 1.11 381d 11519kg 5.25% 3.89%
 3.01 431d 15355kg 5.43% 4.01%
 4.05 410d 17133kg 5.10% 3.90%
 Ext.: 86 86 90 87 VG 88

**De-Su 12236 Balisto**

25-03-2012 US 70625988

Hfp Luc 63

25-10-2012 DE 0537575169

Big Malki

27-03-2012 NL 740466834

Sandra 1

09-09-2012 NL 881087031
 1.11 450d 9853kg 4.32% 3.68%
 3.04 337d 10905kg 4.21% 3.70%
 4.05 361d 13853kg 4.75% 3.84%
 5.07 334d 13639kg 4.59% 3.65%
 Ext.: 89 88 86 86 VG 87

Great Components

Sandra 2 (VG 88) (3th lactation)
(dam of Slash)

What do the bulls Willis, Stilist, Bonaparte and Antidote all have in common? They share the same ancestors in the shape of the cow family of Hyde - a daughter of Major. 'SAMEN' bull VDR Slash (Balu x Malki x Minos) also has the same pedigree line. Two of the defining features of this pedigree (and the bulls mentioned above) include the high components and good conformation. Balu (Balisto x Epic),

Slash's sire, is noted as a bull who inherits good components - just like his maternal line - combined with high milk production His figures for conformation do not disappoint and are generally at a very high level. Balu is also eminently suitable for use on maiden heifers and is one of the rare bulls (similar to Slash himself) to have both the BB and A2/A2 variant for two different types of casein.

Slash's originally American maternal line started in the Netherlands with Major daughter Hyde (VG 86) and divides into two branches via two Ugela Bell daughters out of Hyde. One of these is Ugela Sandy (VG 89), the dam of of the very popular bull Stilist. The other daughter, Ugela Sasta (VG 86), is listed in Slash's pedigree. Via her daughter Selly (VG 86, and dam of breeding bull Willis) and granddaughter Sherry (VG 85) we arrive at her great granddaughter Webster Sherry (VG 86). Combined with O-Man, Webster Sherry produced three very good daughters: Sylke (VG 86 and grand dame of the bulls Bonaparte and Antidote), Seppie (VG 86) and Sonate (VG 87). Sonate is the great great grand dam of Slash via Roumare daughter Sandra, Minos' granddaughter Sandra 1 and great granddaughter of Malki, Sandra 2. Sandra 1 and Sandra 2 are both still active members of the herd and produce milk with high protein contents. Whereas dam Sandra 2 already noted high lactation values as a heifer (LW 148 and now with her second calf LW 138), the striking aspect of grand dam Sandra 1 is the huge increase in values as the lactations progress (1st LW 97, 2nd LW 107 and 3rd LW 134).

Big Malki (AB 87)

Herdbook number	:	NL 740466834
A.I.-code	:	36911
Colour	:	black & white
Date of birth	:	27-03-2012
Breed	:	100% HF
Straw colour	:	turquoise
aAa code	:	165423
Kappa casein	:	AB
Beta casein	:	A1/A1
C.V.M. / B.L.A.D.	:	Free / Free
C.D.H.	:	Free
Maternal line	:	Anna Jacoba



HOEKLAND MAIK

01-09-2006 NL 442030812



BIG ANNA JACOBA 115

02-01-2007 NL 481261040
 2.01 288d 9528 kg 4.14% 3.75%
 3.10 463d 17341 kg 4.75% 4.09%
 5.03 559d 20557 kg 4.62% 3.95%
 6.10 499d 19255 kg 4.72% 3.90%
 8.05 588d 22195 kg 4.79% 4.05%
 Ext.: 90 92 90 88 EX 90



Mascol

13-07-2000 DE 578891748

Hoekland Sjannie 28

11-04-2001 NL 289926372

Skalsumer Jorryn

14-03-2001 NL 330874052

Big Anna Jacoba 106

13-11-2003 NL 378156556
 2.01 338d 8081 kg 4.82% 3.95%
 3.02 456d 13116 kg 4.63% 4.05%
 4.06 398d 12652 kg 4.42% 4.01%
 5.09 331d 10459 kg 4.77% 4.14%
 6.09 264d 6284 kg 5.41% 4.44%
 7.08 349d 11478 kg 4.59% 3.92%
 Ext.: 88 87 88 88 VG 88



Big Anna Jacoba 115 (EX 90)
(dam of Malki)

- Strong, youthful heifers
- Well-attached udder
- Exceptional feet & legs
- Practical type with a will to milk



Big Superstar 146 (EX 90) &
Big Rinie 166 (VG 86) (s. Malki)
Owner: Mts. J.W. & I.M. Knoef-Hendriksen, Geesteren



Big Rinie 166 (VG 86) (s. Malki)
Owner: Mts. J.W. & I.M. Knoef-Hendriksen, Geesteren

BREEDING VALUES

TIP	%Rel	NVI	INET	Lgv.	Base
	98	156	151	411	Z

Production index

%Rel	Dtrs	Hrd	Base	Src	
99	5282	1454	Z	NLD	
Kg milk	% fat	% prot	Kg fat	Kg prot	Inet
837	-0.1	-0.07	26	22	151

Functional traits

Sire	%Rel
Calving ease	100 99
Vitality	99 99
Beef index	101 70

Daughters

Fertility	97	99
NR	91	98
Calving interval	99	99
Mat. Calving process	96	96
Mat. Vitality	100	99
Persistency	107	99
Maturity rate	110	99
Udder Health	105	98
Somatic cell count	103	99
Milking speed	89	99
Robot efficie	90	93
Robot interval	106	93
Robot habituation	101	93
Claw health	108	96
Temperament	92	97
Body weight	102	80

92 94 96 98 100 102 104 106 108

Type score

%Rel	Dtrs	Hrd	Base	Src
99	1460	481	Z	NLD

Frame	98
Type	105
Udder	106
Feet & Legs	109
Total Score	108

Stature	98
Chest width	102
Body depth	99
Angularity	101
Condition	104
Rump Angle	93
Rump Width	103
Rear legs Rear view	104
Rear leg Set	100
Foot Angle	102
Locomotion	110
For udder attachment	107
Front teat placement	96
Teat length	101
Udder depth	104
Rear udder height	107
Central ligament	103
Rear teat placement	103

92 94 96 98 100 102 104 106 108 110



GTPI	PR	PR%	MILK	FAT	FAT%
2844	47	0.01	1433	72	0.06
TYPE	UDC	F & L	NM\$	CM\$	GM\$
1.61	2.18	0.85	651	663	597
C/E	DPR	PL	LIV	SCS	EFI
1.5%	0.7	4.4	-1.2	2.77	8.8%

Milking Speed	97	aAa 615
Temp	101	A2A2

Not often do you find

615 aAa code

Style, Dairyness, Angularity

Great heifer mating option

	USDA	-2	-1	0	1	2
Stature	0.68T					
Strength	0.24S					
Body Depth	0.23D					
Dairy Form	0.62O					
Rump Angle	-0.04H					
Rump Width	0.83W					
R Legs - Side View	-0.75S					
R Legs - Rear View	0.88S					
Foot Angle	1.17S					
Feet & Legs Score	0.95H					
Fore Attachment	2.31S					
Rear Udder Height	2.86H					
Rear Udder Width	2.63W					
Udder Cleft	1.53S					
Udder Depth	1.57S					
F Teat Placement	1.24C					
R Teat Placement	1.80C					
Teat Length	-0.72S					

566HO1328 ADAWAY

DONZINO -ET

Sire: OCD Franchise Rio-ET

Dam: Adaway helix 1775-ET "GP-83" VG-MS

MGS: AOT Silver Helix-ET

MGD: Adaway Tango 1149-ET "VG-85"

3rd Dam: Adaway Shamrocks Dream "VG-86"

4th Dam: Adaway Bolton Deenna-ET "VG-85"

5th Dam: Creek Emerson Derissa-ET "EX-91" DOM

6th Dam: Creek Rudolph Dorette-ET "EX-91" 2E GMD, DOM

7th Dam: Regancrest Leadman Doris-ET "EX-91" GMD, DOM

8th Dam: Snow-N Denises Dellia "EX-95" 2E GMD, DOM

9th Dam: Snow-N Dorys Denise "EX-90" 2E GMD, DOM



GTPI	PR	PR%	MILK	FAT	FAT%
2094	-9	-0.01	-210	5	0.05
TYPE	UDC	F & L	NM\$	CM\$	GM\$
2.83	1.45	1.09	-49	-49	-58
C/E	DPR	PL	LIV	SCS	EFI
2.1%	-0.7	0.1	-3.5	2.78	7.6%

Milking Speed	101	aAa 213 A2A2
Temp	104	

BPI	Overall Type	Mamm	F & Legs Comp.	Rump Comp	Dairy Strength
98	107	110	107	100	97

	USDA	-2	-1	0	1	2
Stature	3.39T					
Strength	2.90S					
Body Depth	3.16D					
Dairy Form	1.83O					
Rump Angle	0.06S					
Rump Width	2.42W					
R Legs - Side View	-0.43S					
R Legs - Rear View	1.85S					
Foot Angle	2.66S					
Feet & Legs Score	1.63H					
Fore Attachment	3.07S					
Rear Udder Height	2.27H					
Rear Udder Width	2.09W					
Udder Cleft	1.57S					
Udder Depth	1.92S					
F Teat Placement	1.05C					
R Teat Placement	1.00C					
Teat Length	1.41L					

566HO1283 OUR-FAVORITE ON POINT -ET

Sire: Walnutlawn Solomon-ET

Dam: Our-Favorite Unlimited "EX-94" 2E

MGS: Maple-Downs-I G W Atwood-ET

MGD: Our-Favorite Obvious-ET "EX-93" 2E

3rd Dam: Our-Favorite Outburst-ET "EX-93" 4E GMD

4th Dam: Our-Favorite Conceited "EX-92" 3E GMD, DOM

5th Dam: Our-Favorite Morgan-ET "EX-92" GMD, DOM

6th Dam: Our-Favorite Megan-ET "VG-89" GMD, DOM

7th Dam: EDR V I Angie Melvina "EX-93" 3E GMD, DOM

8th Dam: EDR Astro Cap Angie "EX-91" 2E GMD, DOM

9th Dam: EDR Chief Astro Angie "VG-87" DOM



3rd Dam: Our-Favorite Outburst-ET "EX-93" 4E GMD



3rd Dam: Rickland Supersire 4577 "VG-85" DOM



GTPI	PR	PR%	MILK	FAT	FAT%
2373	-1	0.04	-390	14	0.10
TYPE	UDC	F & L	NM\$	CM\$	GM\$
3.12	1.80	1.28	167	185	193
C/E	DPR	PL	LIV	SCS	EFI
2.1%	2.0	1.9	0.4	2.95	8.1%

Milking Speed	103	aAa 234
Temp	101	A2A2

BPI	Overall Type	Mamm	F & Legs Comp.	Rump Comp	Dairy Strength
192	107	108	103	101	96

	USDA	-2	-1	0	1	2
Stature	3.49T					
Strength	2.70S					
Body Depth	2.59D					
Dairy Form	1.17O					
Rump Angle	-1.19H					
Rump Width	2.09W					
R Legs - Side View	-0.44S					
R Legs - Rear View	2.05S					
Foot Angle	2.84S					
Feet & Legs Score	1.83H					
Fore Attachment	3.96S					
Rear Udder Height	2.37H					
Rear Udder Width	2.18W					
Udder Cleft	0.72S					
Udder Depth	3.06S					
F Teat Placement	0.56C					
R Teat Placement	-0.13W					
Teat Length	0.60L					

566HO1327 RASBERRY REVELATION -ET

Sire: Our Favorite Undenied-ET

Dam: G-Deruyter Hesnrbg 50816-ET "VG-85"

MGS: OCD Jabir Heisenberg-ET

MGD: Rickland Kingboy 5496-ET "GP-83"

3rd Dam: Rickland Supersire 4577 "VG-85" DOM

4th Dam: Welcome Russell Lisbeth-ET "E-90"

5th Dam: Welcome Baxter Laila-ET "EX-91"

6th Dam: Welcome Oman lady "EX-91" DOM

7th Dam: Welcome Magna Lone=ET "EX-91" GMD, DOM

8th Dam: Welcome Jeff Lonnis-ET "EX-91" 2E GMD

9th Dam: Welcome Luke Loretta-ET "VG-88" GMD



Welcome Oman Lady "EX-91"



5th Dam: Lavender Ruby Redrose-Red EX 96 3E



GTPI	PR	PR%	MILK	FAT	FAT%
2144	-16	0.02	-659	-32	-0.02
TYPE	UDC	F & L	NM\$	CM\$	GM\$
3.16	3.07	1.59	-41	-33	3
C/E	DPR	PL	LIV	SCS	EFI
2.6%	1.7	1.8	0.1	2.89	6.9%

Milking Speed	98	aAa 213
Temp	103	A1A1

BPI	Overall Type	Mamm	F & Legs Comp.	Rump Comp	Dairy Strength
160	103	110	102	95	96

	USDA	-2	-1	0	1	2
Stature	2.87T					
Strength	1.27S					
Body Depth	1.34D					
Dairy Form	1.33O					
Rump Angle	-0.85H					
Rump Width	2.36W					
R Legs - Side View	-0.33S					
R Legs - Rear View	1.71S					
Foot Angle	2.68S					
Feet & Legs Score	2.14H					
Fore Attachment	4.10S					
Rear Udder Height	3.76H					
Rear Udder Width	3.46W					
Udder Cleft	2.04S					
Udder Depth	3.92S					
F Teat Placement	1.42C					
R Teat Placement	1.02C					
Teat Length	-0.11S					

566HO1312 BROOKVIEW

REDLIGHT-RED

Sire: Riverdown Unstopabull-Red

Dam: Brookview Salt-N-Pepa-ET "VG-86"

MGS: Val-Bisson Doorman-ET

MGD: Brookview Ridiculous-ET "EX-91" 3E

3rd Dam: Starmark Ad Roses-Red-ET "VG-88"

4th Dam: Rosedale-L SS Rose-Red-ET "VG-88"

5th Dam: Lavender Ruby Redrose-Red "EX-96" 3E

6th Dam: Northrose-I Lavender-ET *RC "EX-90"

7th Dam: Rosedale Lea-Ann "EX-93" 2E GMD

8th Dam: Stookey Elm Park Blackrose-ET *RC "EX-96" 3E GMD, DOM

9th Dam: Nandette TT Speckle-Red "E-93" DOM



REDLIGHT-RED's FAMILY

Brookview Def Curlycue-Red

1st Place Yearling Heifer in Milk class at the 2019 World Dairy Expo

Same maternal Great-Grandam as REDLIGHT-RED



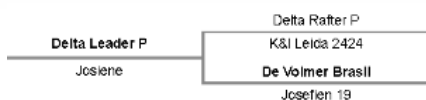
CRVJACKO PP



CRVDUBAI PP



RRP \$24



High Conception Semen

BPI 276	ASI 137				
	PR	PR%	MILK	FAT	FAT%
	14	0.27	13	22	0.30

Over-
all
Type

Mammary

Feet & Legs
Composite

Rump
Composite

Dairy
Strength

102 103 100 101 100

High Milk Components

Good Overall Composites

Wider Rear teats—Robotics

Good Rump Angle

Easy Calving

Great Workability

Good Health Traits

WORKABILITY

Milking Speed	103
Temperament	101
Likeability	103

aAa- 432
A2A2

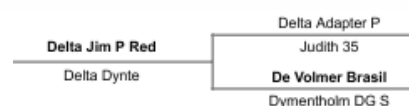
HEALTH

Survival	107
Calving Ease	103
Cell Count	149
Daughter Fert	107
Liveweight	100
Heat Tolerance	95
Mastitis Res.	107

Delta Jim P Red



RRP \$24



BPI 251	ASI 149				
	PR	PR%	MILK	FAT	FAT%
	18	0.22	225	27	-0.25

Over-
all
Type

Mammary

Feet & Legs
Composite

Rump
Composite

Dairy
Strength

98 100 102 95 96

Front End Strength

Feet & Legs

Wider Rear Teats—Robotics

Easy Calving

Good Workability

Health Traits

WORKABILITY

Milking Speed	101
Temperament	100
Likeability	102

aAa- 234
A2A2

HEALTH

Survival	106
Calving Ease	103
Cell Count	152
Daughter Fert	108
Liveweight	100
Heat Tolerance	89
Mastitis Res.	105



CRV**WEBMAIL**



CRV**POPCORN**



VAN DIEMEN
GENETICS



RRP \$16

Flevo Genetics Whatsapp
Mathilda 57

Seagull Bay Supersire
Khaw Super Aderyn
Diepenhoek Rozello
Mathilda 56

BPI 248	ASI 69				
	PR	PR%	MILK	FAT	FAT%
	2	0.15	-231	19	0.42

Over- all Type	Mammary	Feet & Legs Composite	Rump Composite	Dairy Strength
106	105	101	97	98

Good Milk Fat %
Good Overall Composites
Good Mammary Scores
Exceptional Daughter Fertility

WORKABILITY

Milking Speed	99
Temperament	103
Likeability	103

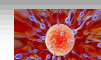
aAa- 342
A1A1

HEALTH

Survival	107
Calving Ease	102
Cell Count	148
Daughter Fert	114
Liveweight	101
Heat Tolerance	100
Mastitis Res.	105



RRP \$18



High Conception Semen

Sire: American Carnival-Red
Dam: Delta Pippa 1

BPI 291	ASI 166				
	PR	PR%	MILK	FAT	FAT%
	23	0.27	330	22	0.11

Overall Type	Mammary	Feet & Legs Composite	Rump Composite	Dairy Strength
99	99	99	99	96

Balanced Composite Traits
Shorter Stature
Easy Calving
Good Rump Angle
Wider Rear Teats—Robotics

WORKABILITY

Milking Speed	102
Temperament	99
Likeability	101

aAa- 342
A2A2

HEALTH

Survival	108
Calving Ease	103
Cell Count	145
Daughter Fert	108
Liveweight	97
Heat Tolerance	93
Mastitis Res.	104



DAM
of
Nano P

RRP \$16

Delta Foxtrot P	West Port Arron Doon Miley P
Janine P Red	Elazon Renate
	Aggravation Lawn Boy P Red
	Jaantje 43



Red Rocks Massia 155 Red VG-86 (s. Wisent RF)

RRP \$16

Delta Wisent
Whatsapp x Atlantic x

BPI 214	PR	PR%	MILK	FAT	FAT%
	7	0.28	-266	4	0.23

Overall Type	Mammary	Feet & Legs Composite	Rump Composite	Dairy Strength
--------------	---------	-----------------------	----------------	----------------

103 102 100 101 97

Good Milk Components
Good Overall Composites
Good Rump Angle
Good Health Traits

BPI 235	PR	PR%	MILK	FAT	FAT%
	15	0.08	404	-11	-0.41

Overall Type	Mammary	Feet & Legs Composite	Rump Composite	Dairy Strength
--------------	---------	-----------------------	----------------	----------------

105 102 103 100 95

Balanced Composite Traits
Great Feet & Legs
Good Workability
Excellent Health Traits

WORKABILITY

Milking Speed	102
Temperament	99
Likeability	99

aAa- 342
A1A2

HEALTH

Survival	107
Calving Ease	102
Cell Count	134
Daughter Fert	109
Liveweight	99
Heat Tolerance	100
Mastitis Res.	103

WORKABILITY

Milking Speed	101
Temperament	102
Likeability	103

aAa- 423
A1A2

HEALTH

Survival	106
Calving Ease	101
Cell Count	165
Daughter Fert	112
Liveweight	102
Heat Tolerance	103
Mastitis Res.	106


RRP \$16

Sire: Shamrock Dam: Goli Flower


RRP \$14

Sire: Goldwyn Dam: Etazon Renate

BPI 231	ASI 103				
	PR	PR%	MILK	FAT	FAT%
	13	0.18	143	15	013

DAUGHTER PROVEN

Over- all Type	Mammary	Feet & Legs Composite	Rump Composite	Dairy Strength
----------------------	---------	--------------------------	-------------------	-------------------

107 104 104 106 100

Well proven in both Australia and Overseas.

LOOK AT THE COMPOSITES

Great Balance with excellent overall type and composite scores with strength front, back and centre.

Good Workability and health scores

Over 5000 daughters.

BPI 238	ASI 125				
	PR	PR%	MILK	FAT	FAT%
	14	0.22	95	20	0.23

DAUGHTER PROVEN

Over- all Type	Mammary	Feet & Legs Composite	Rump Composite	Dairy Strength
----------------------	---------	--------------------------	-------------------	-------------------

105 101 103 106 100

Well proven in both Australia and Overseas

GREAT COMPOSITES

Great balanced Overall Type and Composite scores.

Daughters have good rump angle and Ease of Calving.

Good Workability and Health Traits

WORKABILITY

Milking Speed	100
Temperament	103
Likeability	105

**aAa- 351
A1A1**

HEALTH

Survival	106
Calving Ease	101
Cell Count	157
Daughter Fert	105
Liveweight	101
Heat Tolerance	95
Mastitis Res.	105

WORKABILITY

Milking Speed	100
Temperament	101
Likeability	103

**aAa- 243
A1A1**

HEALTH

Survival	109
Calving Ease	102
Cell Count	149
Daughter Fert	109
Liveweight	101
Heat Tolerance	101
Mastitis Res.	99



CRVFARRELL



RRP \$14

Four-Cal Farrell-ET
Anton x Ecoyne Isy x Domain

BPI 251	ASI 123				
	PR	PR%	MILK	FAT	FAT%
	24	0.00	899	24	-0.20

DAUGHTER PROVEN

Over- all Type	Mammary	Feet & Legs Composite	Rump Composite	Dairy Strength
----------------------	---------	--------------------------	-------------------	-------------------

105 108 100 98 97

Excellent Type & Mammary

Good Workability

Good health Traits

Positive Chest & Muzzle width

Wider Rear Teats—Ideal Robotics

Positive Teat Length

WORKABILITY

Milking Speed	101
Temperament	101
Likeability	103

aAa- 324
A1A2

HEALTH

Survival	109
Calving Ease	102
Cell Count	138
Daughter Fert	108
Liveweight	104
Heat Tolerance	99
Mastitis Res.	98

CRVESTEFANO



RRP \$14

ETazon Stefano
Goldwyn x O Man x Jocko Besne

BPI 226	ASI 165				
	PR	PR%	MILK	FAT	FAT%
	31	0.11	941	25	-0.22

DAUGHTER PROVEN

Over- all Type	Mammary	Feet & Legs Composite	Rump Composite	Dairy Strength
----------------------	---------	--------------------------	-------------------	-------------------

101 102 104 105 101

10 Years On still +56 kgs Milk Solids

Good Over all Composites.

Easy Calving

Good Cell Count

WORKABILITY

Milking Speed	99
Temperament	100
Likeability	102

aAa- n/a
A1A2

HEALTH

Survival	104
Calving Ease	103
Cell Count	154
Daughter Fert	100
Liveweight	101
Heat Tolerance	92
Mastitis Res.	101



CRVLEVATOR



RRP \$16

Vds Metallic	Delta Atlantic
Delta Lady	Vds Milou 18
	Batenburg G Stellando
	Delta Lindsay

BPI 293	ASI 124				
	PR	PR%	MILK	FAT	FAT%
	17	0.23	171	15	011

Over- all Type	Mammary	Feet & Legs Composite	Rump Composite	Dairy Strength
----------------------	---------	--------------------------	-------------------	-------------------

100 99 98 97 98

Very Short Stature—91

Easy Calving

Smaller Cows—very efficient

Excellent health traits.

Wide rear teats—Ideal Robotics

WORKABILITY

Milking Speed	97
Temperament	101
Likeability	100

aAa- 432
A1A2

HEALTH

Survival	108
Calving Ease	104
Cell Count	171
Daughter Fert	112
Liveweight	92
Heat Tolerance	96
Mastitis Res.	107

CRVFUSION



RRP \$16

Waldclass Freeplay	Fanatic
Zwaantje 209	Delta Marlies 2
	Delta Dynamo
	Zwaantje 81 ET

BPI 263	ASI 121				
	PR	PR%	MILK	FAT	FAT%
	18	0.17	319	16	0.04

Over- all Type	Mammary	Feet & Legs Composite	Rump Composite	Dairy Strength
----------------------	---------	--------------------------	-------------------	-------------------

99 98 98 96 101

Lower Stature—97

Good dairy strength

Easy Calving

Good Workability and Health Traits

Wide rear teats—ideal Robotics

WORKABILITY

Milking Speed	103
Temperament	103
Likeability	103

aAa- 342
A2A2

HEALTH

Survival	108
Calving Ease	103
Cell Count	139
Daughter Fert	111
Liveweight	97
Heat Tolerance	101
Mastitis Res.	102



CRVFAIR PP



RRP \$16

Delta Rafter P	♂	Veneriete Deluxe P
Delta Faize	♀	Delta Ruth
	♂	Pine Tree Ohare P
	♀	Delta Fenneke

BPI 243	PR	PR%	MILK	FAT	FAT%
	23	0.11	639	5	-0.32

Over- all Type	Mammary	Feet & Legs Composite	Rump Composite	Dairy Strength
103	103	102	100	100

ALL POLLED CALVES

PP Sire with strength

Good Overall Composites

Excellent health Traits

Positive Chest & Muzzle width

WORKABILITY

Milking Speed	100
Temperament	101
Likeability	103

aAa- 342
A1A1

HEALTH

Survival	109
Calving Ease	102
Cell Count	149
Daughter Fert	109
Liveweight	101
Heat Tolerance	90
Mastitis Res.	109



CRVMENTOR PP



RRP \$16

Delta Lion P	♂	Wilder Kanu P Red
Delta Maalte	♀	Delta Laila
	♂	Maddock Van de Peul P
	♀	Massia 9397 RF

BPI 211	PR	PR%	MILK	FAT	FAT%
	15	0.06	425	4	-0.20

Over- all Type	Mammary	Feet & Legs Composite	Rump Composite	Dairy Strength
101	102	104	99	97

ALL POLLED CALVES

PP Sire—Excellent health Traits

Very Easy Calving

Great Feet & Legs

Good heat tolerance

WORKABILITY

Milking Speed	99
Temperament	100
Likeability	102

aAa- 324
A1A1

HEALTH

Survival	108
Calving Ease	104
Cell Count	152
Daughter Fert	111
Liveweight	97
Heat Tolerance	100
Mastitis Res.	104



CRVBOJAN



RRP \$14

Stantons Camaro	Generations Epic
Da SO Burn Burberry	Stantons Freddie Cameo
	Amighetti Numero Uno
	Da SO Burn Dorcy Becka

BPI 186	ASI 23				
	PR	PR%	MILK	FAT	FAT%
	-3	-0.01	-73	19	0.33

DAUGHTER PROVEN

Over- all Type	Mammary	Feet & Legs Composite	Rump Composite	Dairy Strength
104	103	102	100	93

Great Mammary
Easy Calving
Excellent Fertility
Great Workability
Good Heat Tolerance

WORKABILITY

Milking Speed	103
Temperament	100
Likeability	101

aAa- 234
A1A2

HEALTH

Survival	109
Calving Ease	109
Cell Count	153
Daughter Fert	112
Liveweight	100
Heat Tolerance	103
Mastitis Res.	102

CRVCHUCK



RRP \$18

Cogent Supershot	♂	Seagull Bay Supersire
Bryhill Ransom Marquisse	♀	Rose Superclass
	♂	De SU Ransom
	♀	Sully Robust 720

BPI 277	ASI 95				
	PR	PR%	MILK	FAT	FAT%
	21	0.12	526	3	-0.28

DAUGHTER PROVEN

Over- all Type	Mammary	Feet & Legs Composite	Rump Composite	Dairy Strength
104	103	98	104	99

Management/Health

SCC	107
Ketosis	111
Milking speed	98
Temperament	108
Daughter calving ease	107
Daughter calf vitality	105
Persistency	109

WORKABILITY

Milking Speed	98
Temperament	104
Likeability	104

aAa- 423
A2A2

HEALTH

Survival	111
Calving Ease	104
Cell Count	163
Daughter Fert	111
Liveweight	97
Heat Tolerance	103
Mastitis Res.	104



CRVESPERANTO

CRVABEL



Alex Arkink

RRP \$18

Sire: HONLD000875952040
Dam: Weelder Esmonique 38



Alger Meckma

RRP \$14

DE SU JEROD 1223
OED MOGUL ABRACADABRA
DE SU OBSERVER ET
RI VAL RE MICHAEL JASMINE
MOUNTFIELD 551 DCY MOGUL
VISION GEN SH FRD A12276

BPI 202	ASI 89				
	PR	PR%	MILK	FAT	FAT%
	17	0.03	565	16	-0.12

DAUGHTER PROVEN

Over- all Type	Mammary	Feet & Legs Composite	Rump Composite	Dairy Strength
----------------------	---------	--------------------------	-------------------	-------------------

104 107 101 100 96

BPI 212	ASI 114				
	PR	PR%	MILK	FAT	FAT%
	9	0.23	-115	22	0.38

DAUGHTER PROVEN

Over- all Type	Mammary	Feet & Legs Composite	Rump Composite	Dairy Strength
----------------------	---------	--------------------------	-------------------	-------------------

100 103 100 100 92

Type ABVs Feet and Leg



Excellent Feet & Leg Traits.

Rear Heel Depth	103
Foot Angle	101
Rear Set	103
Rear Leg Rear View	107

Great Mammary
Very Easy Calving
Excellent health Traits
Positive Teat Length

Good Mammary

* Milk Components

* Feet & Legs

* Rump Angle

Good Cell Count

WORKABILITY

Milking Speed	101
Temperament	101
Likeability	103

aAa- 243
A2A2

HEALTH

Survival	108
Calving Ease	103
Cell Count	155
Daughter Fert	101
Liveweight	98
Heat Tolerance	93
Mastitis Res.	105

WORKABILITY

Milking Speed	97
Temperament	102
Likeability	103

aAa- 435
A2A2

HEALTH

Survival	109
Calving Ease	102
Cell Count	153
Daughter Fert	106
Liveweight	99
Heat Tolerance	96
Mastitis Res.	103



CRV DAIRYMAN



RRP \$16

Flevo Genetics Whatsapp	♂ Seagull Bay Supersire
Delta Dalaila	♀ Khr Super Adelyn
	♂ Batenburg G. Stollendo
	♀ Delta Drieske

BPI 258

ASI 80

PR	PR%	MILK	FAT	FAT%
12	0.16	125	5	-0.00

DAUGHTER PROVEN

Over- all Type	Mammary	Feet & Legs Composite	Rump Composite	Dairy Strength
----------------------	---------	--------------------------	-------------------	-------------------

100 102 99 101 97

Good Type & Mammary

Very Easy Calving

Excellent Fertility

Excellent health Traits

Positive Chest & Muzzle width

Great Rump Angle

WORKABILITY

Milking Speed	98
Temperament	103
Likeability	102

aAa- 342

A2A2

HEALTH

Survival	110
Calving Ease	104
Cell Count	155
Daughter Fert	113
Liveweight	95
Heat Tolerance	96
Mastitis Res.	106

CRV REMINDER



RRP \$14

BUTZ BUTLER SHOTGLASS	FLEVO GENETICS SNOWMAN
RAFAELLA ET	GIL GAR SHOTTLE SATIN
	MAY YARD ASWIN
	DELTA RAFAELLA

BPI 217

ASI 87

PR	PR%	MILK	FAT	FAT%
8	-0.01	306	20	0.11

DAUGHTER PROVEN

Over- all Type	Mammary	Feet & Legs Composite	Rump Composite	Dairy Strength
----------------------	---------	--------------------------	-------------------	-------------------

99 104 101 97 95

Excellent health Traits

Smaller Frame Cows

Easy Calving

Good Mammary

Good Feet & Legs

WORKABILITY

Milking Speed	94
Temperament	100
Likeability	101

aAa- 243

A1A1

HEALTH

Survival	106
Calving Ease	103
Cell Count	175
Daughter Fert	107
Liveweight	95
Heat Tolerance	98
Mastitis Res.	108



RRP \$18

Delta Amigo	♂	Delta Atlantic
D Jessi 477	♀	Delta Ariane
	♂	Bouw Snowfever
	♀	Delta Justine



High Conception Semen

BPI 237	PR	PR%	MILK	FAT	FAT%
	26	0.17	626	-1	-0.39

DAUGHTER PROVEN

Over-all Type	Mammary	Feet & Legs Composite	Rump Composite	Dairy Strength
102	98	100	99	96

Very Easy Calving

Excellent Fertility

Excellent health Traits

Positive Chest Width

Positive Teat Length



RRP \$18

Het Meer Bravo	♂	De SU 11236 Balisto
Esmonique 38	♀	Lucky Shot 16
	♂	Delta G Force
	♀	Esmonique 22

BPI 203	PR	PR%	MILK	FAT	FAT%
	14	0.26	28	25	0.35

DAUGHTER PROVEN

Over-all Type	Mammary	Feet & Legs Composite	Rump Composite	Dairy Strength
93	102	96	98	93

HEIFER MATING - calving Ease

Type ABVs Feet and Leg

Rear Heel Depth	97
Foot Angle	100
Rear Set	104
Rear Leg Rear View	106

Good Feet & Leg Traits

High Fat %

Excellent Cell Count

Very good Rump Angle

WORKABILITY

Milking Speed	101
Temperament	98
Likeability	100

aAa- 423

A1A1

HEALTH

Survival	108
Calving Ease	104
Cell Count	152
Daughter Fert	111
Liveweight	95
Heat Tolerance	95
Mastitis Res.	103

WORKABILITY

Milking Speed	93
Temperament	100
Likeability	101

aAa- 423

A2A2

HEALTH

Survival	104
Calving Ease	105
Cell Count	170
Daughter Fert	102
Liveweight	95
Heat Tolerance	96
Mastitis Res.	104



CRVGFORCE

CRVWHATSAPP



RRP \$16

Long Langs Oman Oman	O Bee Manfred Justice ET
Gem	Winning Way Marci
	Riethil Swamo Delta Jordan
	Wiza 197

			ASI	209	
BPI 272	PR	PR%	MILK	FAT	FAT%
	29	0.33	412	29	017

DAUGHTER PROVEN

Over- all Type	Mammary	Feet & Legs Composite	Rump Composite	Dairy Strength
95	99	96	95	93

High ASI—proven production

Now 10,000 daughters

Neth-

Conformation traits	8,941 dtrs 2,111 herds reliability: 99%
Frame	100
Dairy Strength	101
Udder	106
Feet & legs	108
Total score	108

erlands Conformation data

WORKABILITY

Milking Speed	98
Temperament	100
Likeability	100

aAa- 342
A1A2

HEALTH

Survival	103
Calving Ease	103
Cell Count	137
Daughter Fert	107
Liveweight	99
Heat Tolerance	89
Mastitis Res.	104



RRP \$14

Seagull Bay Supersire	Roylane Socra Robust
Khwh Super Aderyn	Ammon Peachey Shauna
	Charlesdale Superstition
	Khwh Goldwyn Aiko ET

			ASI	39	
BPI 230	PR	PR%	MILK	FAT	FAT%
	2	0.13	-168	3	0.15

DAUGHTER PROVEN

Over- all Type	Mammary	Feet & Legs Composite	Rump Composite	Dairy Strength
100	102	99	98	97

Very Good Heat Tolerance

Excellent Health Traits

Very Easy Calving

High Daughter Fertility

High Semen Fertility

WORKABILITY

Milking Speed	101
Temperament	103
Likeability	104

aAa- 243
A2A2

HEALTH

Survival	113
Calving Ease	104
Cell Count	156
Daughter Fert	113
Liveweight	96
Heat Tolerance	103
Mastitis Res.	102



CRVPAISLE



RRP \$12

Mr Welcome Hill Tango	Lotta Hill Shottle 41
Sandy Valley Uno Paxton	Ms Welcome Colby Taya ET
	Amighetti Numero Uno
	Pine Tree Monica Planeta

BPI 220	PRODUCTION ASI 60				
	PR	PR%	MILK	FAT	FAT%
	8	-0.01	306	20	0.11

DAUGHTER PROVEN

Over- all Type	Mammary	Feet & Legs Composite	Rump Composite	Dairy Strength
99	104	101	102	93

Great Mammary
Easy Calving
Excellent Fertility
Great Workability
Good Heat Tolerance

WORKABILITY

Milking Speed	103
Temperament	102
Likeability	104

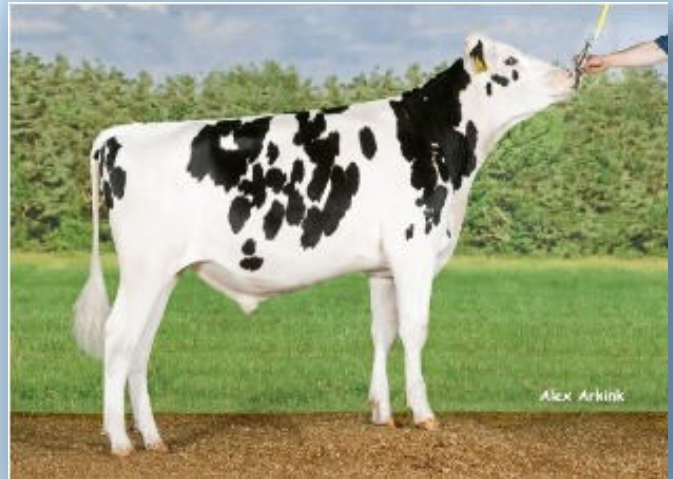
aAa- 342
A1A2

HEALTH

Survival	110
Calving Ease	103
Cell Count	122
Daughter Fert	112
Liveweight	93
Heat Tolerance	103
Mastitis Res.	97



CRVBERNINI



RRP \$12

Delta Atlantic	Ramos
Bea 63	Etazon Renate
	Flevo Genetics Snowman
	Bea 36

BPI 219	PRODUCTION ASI 155				
	PR	PR%	MILK	FAT	FAT%
	21	0.23	343	24	0.13

DAUGHTER PROVEN

Over- all Type	Mammary	Feet & Legs Composite	Rump Composite	Dairy Strength
99	96	101	97	96

Great Front End Strength

- * Milk Components
- * Feet & Legs
- * Rump Angle

WORKABILITY

Milking Speed	100
Temperament	100
Likeability	99

aAa- 423
A1A2

HEALTH

Survival	105
Calving Ease	102
Cell Count	140
Daughter Fert	107
Liveweight	104
Heat Tolerance	99
Mastitis Res.	102



CAPNATION ELATE P A1A2 aAa 423

Very Easy Calving—Shorter Stature—Great Rump Angle

BPI 153

ASI 99

PR	PR%	MILK	FAT	FAT%
16	0.05	512	20	-0.02

Overall Type	Mammary	Feet & Legs Composite	Rump Composite	Dairy Strength
96	97	100	98	97

DELTA FOXTROT P A1A1 aAa 432

Good composites—Strength—Great Rump Angle

BPI 191

ASI 113

PR	PR%	MILK	FAT	FAT%
15	-0.21	134	14	0.12

Overall Type	Mammary	Feet & Legs Composite	Rump Composite	Dairy Strength
101	100	101	102	99

DELTA DANNO A2A2 aAa 342

Great Udders, well liked short stature with strength.

BPI 153

ASI 91

PR	PR%	MILK	FAT	FAT%
24	0.12	650	-5	-0.47

Overall Type	Mammary	Feet & Legs Composite	Rump Composite	Dairy Strength
97	104	98	98	97

PEN COL SS BOBBY A2A2 aAa 123

Good workability, Calving Ease, SCC and F & Legs

BPI 148

ASI 48

PR	PR%	MILK	FAT	FAT%
16	-0.11	804	10	-0.35

Overall Type	Mammary	Feet & Legs Composite	Rump Composite	Dairy Strength
98	100	99	98	97